



NC TRIANGLE AREA CHAPTER # 406
PROGRAM BOOKLET

2005 - 2006

WWW.IMANCTRIANGLE.ORG

North Carolina Triangle Area Chapter 406
Institute of Management Accountants

Table of Contents 2005-2006 Program & Roster

President's Welcome	3
Chapter Educational Program Schedule	4
2005 - 2006 Board of Directors	6
Who We Are	7
Vision Statement, Statement of Mission	7
Services	7
Benefits	9
Membership	11
Obligations as a Member	11
How to join the IMA	11
Admission Criteria	12
Student Membership	12
Guests	12
CPE Requirements - FAQs	13
Ethical Standards	16
Ethics Hotline	19
Chapter Past Presidents	20
Robert Horky Award & Rander Harris Award	22
Emeritus Life Association	23
Stuart Cameron McLeod Society	24
Institute of Management Accountants	25
Carolinas Council	28
National Conference - Las Vegas, NV	31
Chapter Members	32

PRESIDENT'S WELCOME

It is my privilege to address our vast membership of the Triangle Chapter of the Institute of Management Accountants on behalf of the chapter Board of Directors. I would like to thank established members for their continuing support and new members for joining the organization. The goal of the annual roster is to provide you with valuable information about our local chapter, its members, and the benefits of the national and local IMA membership.

With nearly five hundred members in its ranks, the Triangle IMA membership provides outstanding opportunities for professional networking, one of the organization's main reasons for existence. As you read through the list of our members in this roster, you will be undoubtedly impressed by the depth and breadth of careers and organizations our members represent. Through dinner meetings, CPE seminars, and Carolina conferences, we provide a forum for the area professionals to meet, socialize, and stay on top of what's hot in the profession. So, take advantage of the roster, which gives you information about all current chapter members.

The Certified Management Accountant (CMA) designation provides corporate management and individual Members with an objective measure of knowledge and competence in the field of management accounting. The CMA is an invaluable credential for professional advancement and for broadening professional skills and perspective. Our chapter partners with various education providers to help members successfully pass the necessary examination. Our most recent cooperation with Duke University Continuing Studies offers a nine-month instructor-led course to prepare candidates to sit for the CMA exam. For more information on CMA Learning System, visit www.learnmore.duke.edu/cma. Our chapter has entered into a partnership with Gleim to ensure your success on the CMA/CFM exams. Because of your membership in the North Carolina Triangle Area Chapter, you are eligible for significant discounts (20% to 40%) on any of Gleim's CMA/CFM materials.

Most of you know that we meet every third Thursday for a monthly dinner meeting and an expert speaker session. Big news this year is that we have a new meeting place. The Gateway Jazz Café opened its doors for us. Everyone is most welcome to come and enjoy an evening of unique ambiance, terrific menu by a French chef Alain Wellerstein, and fun time chatting with other IMA die-hards.

Feel free to contact me or a member of the Board if you have any questions or suggestions to the Chapter. Please enjoy our annual roster, and I hope to greet you at our social functions soon.

MS

My sincere regards,
Maksym (Max) Shyshnyak, CMA CFM CPA
IMA Chapter #406 President

North Carolina Triangle Area Chapter 406
Institute of Management Accountants

CHAPTER EDUCATIONAL PROGRAMS SCHEDULE

Our dinner meetings are held the third Thursday of each month. Generally, they start with a social period at 6:00 PM, dinner at 6:30 PM and business meeting at 7:00 pm. The speaker follows from 7:15 PM to 8:15 PM. We don't have all the speakers and subjects confirmed, so please check our newsletter, website (<http://www.imanctriangle.org>), or email Ron Lowell at rlowell@nc.rr.com to put yourself on a fax or email list for updates to the monthly dinner meetings.

We have designated certain nights for special recognition of members or Board activities as follows:

Date	Topic	Speaker
09/15/2005	Successful Business Tool Kit	Lea Strickland, CMA, CFM, CBM F.O.C.U.S. Resources, Inc.
10/20/2005	Internal Controls From the Ground Up Student Night	Gareth Montague-Smith, Sr. Manager Audit and Assurance, KPMG
11/17/2005	2006 Economic outlook for our local area & the National outlook Toys for Tots	Adrian Cole
December	Special Holiday Event	Wine Tasting @ Gateway Jazz Café
01/19/2006	Compensation/Benefits	Ann Hartree
02/16/2006	Ethics Joint Meeting IIA	Lloyd Hackley
03/16/2006	State Budget Process	Richard H. Moore, State Treasurer (Tentative)
04/20/2006	Enterprise Risk Management CMA/CFM Night	Professor Mark Beasley, NC State
05/18/2006	Accountant's Role as a Strategic Partner Past Presidents' Night	TBD

North Carolina Triangle Area Chapter 406
Institute of Management Accountants

Dinner Registration Information

6:00 PM Registration & Social
6:30 PM Dinner
7:15 PM Speaker
9:00 Networking ends and Board meeting begins

Please register on line at our chapter website <http://www.imanctriangle.org/register.htm>

Directions to Gateway Jazz Café:

- From I-40 Exit 285 (Aviation Parkway)
- Go South (From Durham turn right, from Raleigh turn left).
- Take 1st right at Gateway Centre Boulevard
- Go ~ 1/3 mile on Gateway Centre Blvd, then turn right onto Northgate Court (at the 3500 sign)
- Take 1st left into parking lot. Gateway Jazz Café is located in the far left end of the office building
- If you have any trouble finding the Café, please call Café (919) 863-2233 or Kathy Santos-Rezendes (919) 740-5289

The buffet dinner meeting cost is \$25 for Chapter IMA members, \$30 for non-IMA members, NC State students Chapter members are \$15. These prices are subject to change. The dinner meeting is a one hour CPE event.

We plan to offer several Pre-Dinner CPE Offerings prior to our regularly scheduled dinner meetings.

Pre-Dinner CPE Offerings

Date	Topic	Speaker
11/17/2005	Financial Planning	Andy Smith, Smith Barney
01/19/2006	Sales & Use Tax Update	TBD
02/16/2006	FASB Update	TBD
03/16/2006	Technical Cost Update	TBD
March	Job Fair	Various Employers
04/20/2006	Leading Practices in Expense Management	TBD

CAROLINAS COUNCIL

The Carolinas Council (<http://www.imacarolinascouncil.org>) generally offers additional CPE credits each quarter in locations throughout the Carolinas.

The Fall Council Meeting is October 28-29, 2005 in Columbia, SC followed by the Winter Meeting in Gaston, NC from February 2006. The Spring Conference is at Ocean Creek Resort, N. Myrtle Beach, SC from April 27 - 29, 2006.

North Carolina Triangle Area Chapter 406
Institute of Management Accountants

Board of Directors for 2005-2006

Office	Name	Phone #	Email
President	Max Shyshnyak	919-773-5973	maksym.shyshnyak@pergo.com
NC State Student Chapter Carolina Council Delegate	Scott Truax Ron Lowell	816-0807 919-941-2131(w) 919-604-3575 ©	jstruax@ncsu.edu ronlowell@solectron.com
VP Administration	Bob Boone	919-571-7828	Rdboone2000@yahoo.com
Treasurer	Chris Johnson	919-773-5189	chris.johnson@pergo.com
Secretary	Jim Santaniello	919-875-6665	Jim.santaniello@highwoods.com
Director Employment	Chris McKittrick	919-845-9127	Ctm1999@hotmail.com
Dir. Member Attendance	Vance Josey	556-3475 x223	vjosey@NC.RR.COM
Co-Dir. Fund Raising	Teresa Muncer-Shimp	919-859-5550 X206	Teresa.shimp@ajilonoffice.com
Co-Dir. Fund Raising			
VP Membership			
Dir. Member Acquisition	Tanya Edmonds	878-5005 x129	Tanya.edmonds@hudson.com
Director Retention			
Dir. Special Activities			
VP Education	Ron Lowell	919-941-2131(w) 919-604-3575 ©	ronlowell@solectron.com
Dir. CMA/CFM Program	Ted Greer	919-949-4809	ted.greer@sanmina-sci.com
Dir. Seminars	Lowell Miller	919-831-0100	nclhga@earthlink.net
Dir. Student Activities	Christina Cook		wchrisy@hotmail.com
Dir. Program Registration	Jennifer Harris Coltrane	919-515-9230	jenncats@earthlink.net
Co-ChairCorp.Development	Joseph Fields	919-474-3215	josephfields@spherion.com
Co-ChairCorp.Development			
VP Communications	David Roth	919-878-5005	thefamilyroth@bellsouth.net
Director Newsletter			
Director Public Relations	Nancy Smith	919-378-6509	Nancy.e.smith@mci.com
Director Website & Roster	Kathy Santos-Rezendes	919-541-6162	Rezendes@bellsouth.net
Director Community Service	Ted Bachman	919-606-3477	tedbachman@mindspring.com

North Carolina Triangle Area Chapter 406
Institute of Management Accountants

WHO WE ARE

VISION STATEMENT

"Global Leadership in education, certification, and practice of management accounting, finance and information management."

STATEMENT OF MISSION

Provide to members personal and professional development opportunities through education, association with business professionals, and certification in management accounting and financial management skills. Ensure that IMA is universally recognized by the financial community as a respected institution influencing the concepts and ethical practices of accounting, financial and information management skills.

SERVICES

Among the services available from which a member can benefit from are:

- Leadership Training - Volunteer service at the chapter or national level gives you valuable leadership experience. Volunteer leaders begin their service at the chapter board level, and may elect to regional council service, national committee service, and national board service
- Employment Networking - IMA serves as a clearing house for members interested in either placing an "open position available" or "position wanted" notice in a local chapter or council newsletter, or in the career center on the IMA website
- The IMA Professional Development-Lifelong Learning Center gives Management Accountants and Financial Professionals lifelong learning and "employability" from hire to retire.

Members have access to a portfolio of products and services to meet their educational needs in both technical and personal development skills. Educational services have been developed with member convenience in mind and are offered in all mediums and are available at any time, in any place and at a range of prices. Training is delivered in multiple ways, including online, self-study, in house/on site, conferences and seminars. In addition, a large selection of professional publications are available for purchase.

North Carolina Triangle Area Chapter 406
Institute of Management Accountants

SERVICES cont'd

Participation in any IMA training is approved CPE credit for those members who are certified:

- McLeod Information Center - Members have access to one of the largest and most comprehensive collections in the ;management accounting and financial management fields.
- Ethics Counseling Service - A counselor will assist members in applying the IMA Standards of Ethical Conduct for Management Accountants and Financial Professionals to specific problems. Members using this hotline service are guaranteed confidentiality
- Certified Management Accountant (CMA) Program - The CMA Program requires the candidate to pass a rigorous four part examination and meet specific educational and professional competence in the field of management accounting.
- Certified in Financial Management (CFM) Program - The CFM will confirm your proficiency in financial management and your dedication to personal and professional growth. As the body of knowledge of the CFM examination is complementary with that of the CMA examination, three of the examination parts (Parts 1, 3, and 4) will be the same for both programs. Part 2 of the CFM examination will be devoted to in-depth testing of corporate financial management topics.
- Read Strategic Finance magazine for the latest trends and techniques in our field and Management Accounting Quarterly for the latest research. Both publications are included as benefits of your IMA membership. Visit the Strategic Finance website (<http://www.strategicfinancemag.com>) for the reviews on software available in the industry.
- Membership Interest Groups (MIGs) - The Controllers Council, Cost Management Group and Small-Business Council each provide a tailored monthly newsletter, a separate e-mail exchange for networking and sharing information, and access to the MIGs online directory, which allows members to locate colleagues by industry, location, and special projects. Members participate in surveys on a wide range of relevant, topical issues, with results reported in the newsletters and other media.
- Industry Sectors/E-Mail Exchanges - Accessible to members via the Internet at no cost, Industry Sectors offer a variety of ways to reach out to other members in your industry. Once you join an Industry Sections, you can sign up for its e-mail exchange, which enables you to ask questions of hundreds of other members by simply sending an e-mail to the group address. Discussions over topics from software development to accounting policies to career issues and more. There are Industry Sectors for the

North Carolina Triangle Area Chapter 406
Institute of Management Accountants

SERVICES cont'd

- following industries: Academic, Communications/Telecommunications, Construction, Government, Health Care, Manufacturing, Natural Resources, Not-for-Profit, Services, Technology, Transportation, Wholesale/Retail, and Utilities.
- Open e-mail Exchanges - In addition to the e-mail exchanges related to specific industries, you can join IMA e-mail Exchanges dealing with other special interests. These include: Certification Candidates, Financial Management, Family Business, and International Business.
- Membership Discount Programs - IMA offers saving to members on a wide variety of services and products including car rental, insurance, office resources, and financial services.
- IMA Online Marketplace - Do your shopping online at a discount. All IMA members receive discounts on the products and services for their home or workplace that are offered through the IMA Online Marketplace at www.imanet.org.

BENEFITS

As an IMA member, you will not only take advantage of the prestige that comes from membership in the world's largest association of business financial executives, you will also:

- Receive, every month, the IMA's innovative magazine, Strategic Finance
- Receive the IMA's new journal, Management Accounting Quarterly
- Qualify to join financial executives around the world as a candidate for one of IMA's professional certifications, the CMA (Certified Management Accountant) or CFM (Certified in Financial Management)
- Have access to the members-only areas of the IMA Web site, www.imanet.org, featuring the IMA career site and Job Bank, the IMA Member Interest Groups, and access to the IMA member discount programs, featuring personal and business discounts on:
 - Discounted Shipping Services: UPS, Airbone
 - Banking & Finance: MBNA credit cards 1-800-847-7378 Consumer Finance Loans (Gold Reserve & Gold Option) 1-800-892-8349, Investor Services (CD & Money Market) 1-800-345-0397
 - Auto Rentals: Hertz 1-800-654-3131 Reference # CDP60241 and Alamo 1-800-354-2322 Reference # BY165532
 - Office & Home Products: Penny-wise office products and Framing Success

North Carolina Triangle Area Chapter 406
Institute of Management Accountants

BENEFITS cont'd

- IMA's insurance plans: Group Term Life; Automobile & Homeowners; Small Business; High-limit Accident; In-hospital; Disability; Long Term Care; Excess Major Medical; Medicare Supplement; and Cancer Expense
- Be able to access IMA's Online Marketplace, featuring member discounts on a wide variety of personal and business products and services offered by the leading .com retailers
- Qualify for member discounts on all IMA conferences and seminars, held nationally and regionally
- Qualify for free on-line professional education courses
- Be able to join one of the IMA's Member Interest Groups— Controllers Council, Cost Management Group, the Small-Business Council, and the Sarbanes-Oxley (SOX) Group, the newest MIG.
- Be able to participate, at no extra cost, in one of IMA's 13 Industry Sector groups and 6 topic groups, in which you will be able to network with your peers who are working in the same industry as you are
- Be able to access the latest research in the financial management field, through the IMA's respected Foundation for Applied Research, or through the McLeod Information Center, the largest resource of its kind
- Qualify for membership in one of IMA's nearly 300 local chapters, a great source for networking, new ideas, and information about business trends nationally and locally
- Take advantage of IMA's exclusive relationship with Robert Half International, our National Career Partner and the largest financial search firm and career resource in the world

To learn more about IMA benefits and services, and for information on contracting the IMA and its departments directly, please visit the IMA website at www.imanet.org.

MEMBERSHIP

Members in IMA range from management accountants and financial management professionals just beginning their careers to presidents and CFOs of major corporations. Membership also includes Certified Public Accountants, educators, students, and many involved with federal, state, and local governments.

YOUR OBLIGATION AS A MEMBER

1. Attend every chapter meeting if at all possible. If you can not attend the dinner, attend the technical session.
2. Become better acquainted with your fellow members, exchange ideas and discuss mutual problems.
3. Develop interest in the executives of your company in the chapter and bring them to the chapter meetings and other affairs.
4. Funds are paid to the Chapter by the National Headquarters based upon membership growth, certified professional education credits and certification levels within the chapter. While we have the means to track membership growth and certification levels, we need your help in ensuring that your CPE hours are correctly credited back to us as a chapter for the maximum return of your annual dues back to us. Please use either the local or national website and record all CPE, whether put on by us, your employer or another CPE registered provider. The most important single source of competition points is member attendance. Attend the meetings, enjoy the speakers and help the chapter in competition.
5. Submit names of prospective members to the Vice-President, or Membership Director to help the chapter grow.

HOW TO JOIN THE IMA

We invite you to review the criteria for membership, and to learn more about the IMA by browsing our website and checking out the introduction to the IMA and reasons you should consider joining us. When you're ready, complete the membership application to join. It's a step to greater professional fulfillment and advancement.

North Carolina Triangle Area Chapter 406
Institute of Management Accountants

ADMISSION CRITERIA FOR MEMBERSHIP

(a) Membership in the Institute shall be open to all persons who are interested in the goals and objectives of the Institute, and who are willing to subscribe to the Bylaws of the IMA.

(b) All persons residing within the United States, its possessions, or Canada, and who are otherwise qualified for membership under the Bylaws, are eligible for membership as Regular Members, Associate Members or Student Members and all persons residing outside the United States who are otherwise qualified for membership under the Bylaws are eligible for membership as Regular International Members-at-Large as defined in Article II, Section 2 of the Bylaws.

NOTE: Prior felony conviction - Your application, with a brief explanation of circumstances, should be sent directly to the Executive Director of IMA, 10 Paragon Drive, Montvale, NJ 07645, in an envelope marked "Confidential."

STUDENT MEMBERSHIP

If you are a prospective student member, we invite you to visit our student site at www.ncsu.edu/stud_orgs/ima and review the Student Information Kit. To join, please fill out our student membership application.

GUESTS

Members are privileged to invite guests to our chapter meetings and discussion forums. We believe that these guests will enjoy our programs and find something of value in them.

We are very interested in active members, rather than a large membership. We invite guests to apply for membership if they can benefit from the services of the IMA with the understanding that such benefits are usually in direct proportion to the participation in the various chapter activities.

CPE REQUIREMENTS

What is the CPE requirement for CMAs/CFMs?

- CMAs/CFMs - 30 CPE credits each calendar year to keep their certification

When does my CPE requirement start?

- Members who have successfully completed CMA/CFM exam - the calendar year following completion (for example, if you were notified June 1999, the CPE requirement began Jan 1, 2000).

How do I report my CPE credits?

Credits earned at national IMA seminars are automatically reported on your billing statement. You are required to check "I am in compliance" or "I am not in compliance" on the IMA dues billing statement. It is printed in red on the top right-hand side of the document. Please note that you are reporting for the previous calendar year, i.e., 1999 CPE is reported on your 2000 billing statement.

Outside providers are not included in this reporting. The documentation does not have to be submitted, but it does need to be reported to national or to your local chapter (www.imanctriangle.org/record_cpe.htm) for proper credit to your chapter. It should also be retained by the member as IMA randomly verifies this information.

How does IMA verify my credits from outside providers?

If you are selected by IMA for verification of your credits, you will then be asked to submit proper documentation, i.e., certificate, attendance roster, etc. Records should be kept for 5 years.

I have completed more than my required credits. Can any credits be carried forward to next year?

When a certified member (CMA/CFM) completes more than 30 credits in a given year, up to 10 credits may be carried forward to the next year (i.e., if 38 credits are completed, 8 may be carried forward; if 45 credits are completed, only 10 credits may be carried forward).

What is the policy for delinquency in reporting required CPE credits?

Certification status becomes inactive when a CMA/CFM fails to complete 30 CPE credits in a year. To return to good standing, the CMA/CFM must complete 60 CPE credits by the end of

North Carolina Triangle Area Chapter 406
Institute of Management Accountants

CPE Requirements cont'd

the next calendar year (i.e., 30 credits for the current year plus any shortfalls from the previous year). For instance, if a CMA/CFM completed 20 credits in 1998 and reported 40 credits in 1999, the status will be returned to good standing.

If the 60 credits were not accomplished in the two-year period, the only way to return to good standing is to complete 60 credits in the next calendar year.

Do I get CPE credit for the CMA/CFM examinations?

You earn 12 hours of CPE for each part of the CMA/CFM certification exam that you pass. CMAs earn 12 CPE hours for passing Part 2 of the CFM exam and CFMs earn 12 hours of CPE for passing Part 2 of the CMA exam. CMA/CFM exam CPE credits will be posted to your account on a monthly basis.

What topics and programs are acceptable for CPE credit?

The topics should be related to those covered on the CMA/CFM examination and/or your job responsibilities.

For example, all aspects of accounting, business applications of mathematics and statistics, computer science, economics, finance, management, production, marketing, business law, and behavioral science.

Programs may be regular college courses, seminars, workshops or technical meetings under the direction of a speaker, instructor or discussion leaders.

CPE Measurement Guidelines

- College courses - 15 CPE per semester credit hour, 10 CPE per quarter credit hour
- Short courses/seminars - 1 CPE per 50 minutes of session time.
- A full day program with at least 7 hours of session time (not including lunch and breaks) equals 8 CPE credits.
- Speaker/discussion leader in a program or seminar offered by business, professional associations, and college/university professional education centers - CPEs equal 2x the number of presentation hours.
- College teacher - CE credit equal to the course credit hours x the number of weeks (only the first time course is taught). CPE credit may be requested only once in any three-year period unless the material or textbook used has changed substantially.

North Carolina Triangle Area Chapter 406
Institute of Management Accountants

Other qualified Ways to Earn CPE Credit

- Accounting periodicals, computer software programs, examinations, and self-study programs will receive the credit hours recommended by sponsoring organizations.
- Technical materials submitted for publication are eligible for CPE.
- Published articles containing technical accounting and financial management material can earn a maximum of six hours each.
- Books and monographs can earn a maximum of 20 hours each. If an item was submitted for publication but was not accepted, it would earn one half the credits it would have earned if published. IMA will assign specific hours upon receipt of a copy of the publication.

ETHICAL STANDARDS

ETHICAL BEHAVIOR FOR PRACTITIONERS OF MANAGEMENT ACCOUNTING AND FINANCIAL MANAGEMENT

In today's modern world of business, individuals in management accounting and financial management constantly face ethical dilemmas. For example, if the accountant's immediate superior instructs the accountant to record the physical inventory at its original costs when it is obvious that the inventory has a reduced value due to obsolescence, what should the accountant do? To help make such a decision, here is a brief general discussion of ethics and the "Standards of Ethical Conduct for Members."

Ethics, in its broader sense, deals with human conduct in relation to what is morally good and bad, right and wrong. To determine whether a decision is good or bad, the decision-maker must compare his/her options with some standard of perfection. This standard of perfection is not a statement of static position but requires the decision-maker to assess the situation and the values of the parties affected by the decision. The decision-maker must then estimate the outcome of the decision and be responsible for its results. Two good questions to ask when faced with an ethical dilemma are, "Will my actions be fair and just to all parties affected?" and "Would I be pleased to have my closest friends learn of my actions?"

Individuals in management accounting and financial management have a unique set of circumstances relating to their employment. To help them assess their situation, the Institute of Management Accountants (IMA) has developed the following "Standards of Ethical Conduct for Members."

STANDARDS OF ETHICAL CONDUCT FOR MEMBERS

Members of IMA have an obligation to the public, their profession, the organizations they serve, and themselves, to maintain the highest standards of ethical conduct. In recognition of this obligation, the IMA has promulgated the following standards of ethical conduct for its members. Members shall not commit acts contrary to these standards nor shall they condone the commission of such acts by others within their organizations.

Members shall abide by the more stringent code of ethical conduct, whether that is the standards widely practiced in their country or IMA's Standards of Ethical Conduct. In no case will a member conduct herself or himself by any standard that is not at least equivalent to the standards identified for members in IMA's Standards of Ethical Conduct. The standards of ethical conduct for IMA members are published in SMA 1C (Statement on Management Accounting).

COMPETENCE

Members have a responsibility to:

- Maintain an appropriate level of professional competence by ongoing development of their knowledge and skills.
- Perform their professional duties in accordance with relevant laws, regulations, and technical standards.
- Prepare complete and clear reports and recommendations after appropriate analyses of relevant and reliable information.

CONFIDENTIALITY

Members have a responsibility to:

- Refrain from disclosing confidential information acquired in the course of their work except when authorized, unless legally obligated to do so.
- Inform subordinates as appropriate regarding the confidentiality of information acquired in the course of their work and monitor their activities to assure the maintenance of that confidentiality.
- Refrain from using or appearing to use confidential information acquired in the course of their work for unethical or illegal advantage either personally or through third parties.

INTEGRITY

Members have a responsibility to:

- Avoid actual or apparent conflicts of interest and advise all appropriate parties of any potential conflict.
- Refrain from engaging in any activity that would prejudice their ability to carry out their duties ethically.
- Refuse any gift, favor, or hospitality that would influence or would appear to influence their actions.
- Refrain from either actively or passively subverting the attainment of the organization's legitimate and ethical objectives.
- Recognize and communicate professional limitations or other constraints that would preclude responsible judgment or successful performance of an activity.
- Communicate unfavorable as well as favorable information and professional judgments or opinions.
- Refrain from engaging in or supporting any activity that would discredit the profession.

OBJECTIVITY

Members have a responsibility to:

- Communicate information fairly and objectively.
- Disclose fully all-relevant information that could reasonably be expected to influence an intended user's understanding of the reports, comments, and recommendations presented.

RESOLUTION OF ETHICAL CONFLICT

In applying the standards of ethical conduct, members may encounter problems in identifying unethical behavior or in resolving an ethical conflict. When faced with significant ethical issues, members should follow the established policies of the organization bearing on the resolution of such conflict. If these policies do not resolve the ethical conflict, such members should consider the following courses of action.

- Discuss such problems with the immediate superior except when it appears that the superior is involved, in which case the problem should be presented initially to the next higher managerial level. If a satisfactory resolution cannot be achieved when the problem is initially presented, submit the issues to the next higher managerial level. If the immediate superior is the chief executive officer, or equivalent, the acceptable reviewing authority may be a group such as the audit committee, executive committee, board of directors, board of trustees, or owners. Contact with levels above the immediate superior should be initiated only with the superior's knowledge, assuming the superior is not involved. Except where legally prescribed, communication of such problems to authorities or individuals not employed or engaged by the organization is not considered appropriate.
- Clarify relevant ethical issues by confidential discussion with an objective advisor (e.g., IMA Ethics Counseling service) to obtain a better understanding of possible courses of action. - Consult your own attorney as to legal obligations and rights concerning the ethical conflict.
- If the ethical conflict still exists after exhausting all levels of internal review, there may be no other recourse on significant matters than to resign from the organization and to submit an informative memorandum to an appropriate representative of the organization. After resignation, depending on the nature of the ethical conflict, it may also be appropriate to notify other parties.

ETHICS HOTLINE

The Institute of Management Accountants has an ethics hotline exclusively for use by IMA members. Members can call toll-free at 1-800-638-4427 x1662 or send e-mail to ethics@imanet.org. The IMA does not record phone numbers or e-mail addresses. Those who contact the hotline can be provided with a numerical code for identification, to maintain confidentiality.

The hotline was founded by Howard L. Siers (former chair, Ethics Committee) and initiated in 1991. Its purpose is to provide guidance to those members in the profession that find themselves in an ethical dilemma.

After a preliminary discussion of the problem, the caller is referred to an ethics counselor and receives a code number to preserve anonymity. The caller is informed of the hotline's intent that emphasizes confidentiality. The counselor will not provide a specific resolution but will explain how the dilemma relates to the provisions of the ethics standards. It is the responsibility of all IMA members to adhere to the "Standards of Ethical Conduct for Practitioners of Management Accounting and Financial Management." The Standards can be found in IMA's website.

North Carolina Triangle Area Chapter 406
Institute of Management Accountants

PAST PRESIDENTS

1967-1968	Raleigh	Bill Lassiter	1986-1987	Raleigh	Colby Daughtry
1968-1969	Raleigh	David E. Rodger		Durham	Robert Wells
1969-1970	Raleigh	William A. Terrill		Fayetteville	Karin J. Cherry
1970-1971	Raleigh	Thomas A. Brafford	1987-1988	Raleigh	Gil J. Zuckerman
1971-1972	Raleigh	Robert L. Horky		Durham	Charles Sisak, Jr.
1972-1973	Raleigh	Karen Lee Schmitz	1988-1989	Raleigh	A. Thomas Finnell
1973-1974	Raleigh	Nicholas M. Perry		Durham	Jackie Robinson
	Fayetteville	Clarence Williams		Fayetteville	Henry Harman, Jr.
1974-1975	Raleigh	Larry Childers	1989-1990	Raleigh	Anne C. Jones
	Fayetteville	Clarence Williams		Durham	Nona D. Fisher
1975-1976	Raleigh	William R. Casteen		Fayetteville	Jackie Robinson
	Fayetteville	Richard C. Jarvies	1990-1991	Raleigh	Herbert K. Bales
1976-1977	Raleigh	Robert E. Weaver		Durham	Clarice Wellman
	Fayetteville	John C. Gravlin		Fayetteville	Rena L. Elliott
1977-1978	Raleigh	R. Horace Johnson	1991-1992	Raleigh	Annette West
	Fayetteville	John C. Ellsworth		Durham	Brown Cardner
1978-1979	Raleigh	Steven L. Feiner		Fayetteville	Phyllis MacDonald
	Fayetteville	Jerry T. King	1992-1993	Raleigh	Rander Harris
1979-1980	Raleigh	Robert D. Barry,		Durham	Carl Allen
	Durham	Robert Taylor		Fayetteville	Richard Jarvies
	Fayetteville	Jack A. Watson	1993-	Raleigh	Mike Joiner

North Carolina Triangle Area Chapter 406
Institute of Management Accountants

			1994		
1980-1981	Raleigh	G. Rudy Wright, Jr.		Durham	Chris Cameron
	Durham	Larry Scott		Fayetteville	Nona D. Fisher
	Fayetteville	Lester B. Sumner	1994-1995	Raleigh	Bill Bevan
1981-1982	Raleigh	Gonzalo Fernandez		Durham	Steve Drago
	Durham	Thomas Adams	1995-1996	Raleigh	Todd Bishop
	Fayetteville	Gerald Teele		Durham	Anthony Ward
1982-1983	Raleigh	Ann H. Crumpler	1996-1997	Raleigh	Phil Horton
	Durham	Ed McBride		Durham	Robbie Mitchell
	Fayetteville	William Epps		Fayetteville	David D. Mitchell
1983-1984	Raleigh	C. Ray Pittman, Jr.	1997-1998	Raleigh	Luise Kutsch-Barnes
	Durham	Barbara Wilson		Durham	Alfreda Johnson
	Fayetteville	Hilda Kirby	1998-1999	Raleigh	Sue Durphy
1984-1985	Raleigh	Rudolf G. Ofcharfik	1999-2000	Raleigh	BelindaLea Barnhart*
	Durham	Lee Johnson	2000-2001	Raleigh	Phil Keren
	Fayetteville	Walter Swing	2001-2002	Raleigh	Ronald J. Lowell
1985-1986	Raleigh	David B. Plyer	2002-2003	Raleigh	Ronald J. Lowell
	Durham	James Sweet	2003-2004	Raleigh	Kathy Santos-Rezendes*
	Fayetteville	Erdeen G. Chestnut	2004-2005	Raleigh	Chris Johnson

* Stephenson Chapter Competition Banner Winner

North Carolina Triangle Area Chapter 406
Institute of Management Accountants

THE ROBERT HORKY AWARD

The Robert Horky Award is given annually by the Board of Directors to a member of the Chapter, who is not an officer, who has contributed materially to the success of the Chapter during the year.

1986	Robert L. Horky
1987	Craig G. Dalton
1988	Lowell E. Miller
1989	Michael J. Mackey
1990	David P. Caccamo
1991	Gilroy Zuckerman
1992	Mike Joiner
1993	Todd Bishop
1994	Luise Kutch-Barnes
1995	Timothy Romocki
1996	James L. Burke
1997	Belinda Lea Barnhart
1998	Keith Hermann
1999	Jennifer Harris
2000	Katherine A. Santos-Rezendes
2001	Max Shyshnyak
2002	Nancy Smith
2003	Teresa Muncer-Shimp
2004	Katherine A. Santos-Rezendes

THE RANDER HARRIS AWARD

The Rander Harris Award is given annually by the Board of Directors to a member of the Chapter, who has demonstrated Rander's spirit of giving to the organization and for their accomplishments in promoting chapter goals and growth.

2003	Rander Harris
2005	Ron Lowell

North Carolina Triangle Area Chapter 406
Institute of Management Accountants

EMERITUS LIFE ASSOCIATES AND MEMBERS

A member of the Institute having retired from active business, reached age 55, completed 20 years of membership with the Institute, including five years as an elected National, Regional, or chapter officer or director, shall be designated an Emeritus Life Member (ELM) and pay 25% of regular member dues.

Emeritus Life Associates are members having attained the designation of ELA prior to 7/1/93 and may elect to become an ELM and receive benefits (like the magazine) or remain an ELA and not receive the benefits.

Thomas N. Braddford
Franklin L. Buchheit
Kenneth G. Evancie
Gonzalo Fernandez
Arthur G. Gillum
William H. Green
Clarence R. Haldy
M. James Hollis
B. Hooks
Ralph E. Kern
Lawrence S. Lanset
Martin R. Marks
John C. Marsh
Robert D. McGee
Jerome A. Power
Taylor T. Thorne
William J. Wall
Whitten P. Windham

North Carolina Triangle Area Chapter 406
Institute of Management Accountants

STUART CAMERON McLEOD SOCIETY

Membership in the Stuart Cameron McLeod Society (SCMS) consists of current and past national officers and directors of the Institute of Management Accountants. The purpose of the SCMS is to promote and perpetuate friendships developed through service in IMA. It also provides an opportunity to its members, through their interest and experience, to offer leadership and guidance in the development, growth and expansion of the Institute of Management Accountants. The SCMS was formed in 1934 as the Spot Club. In 1957, the name was changed in recognition of Stuart Cameron McLeod, one of the founders of the Spot Club and Executive Secretary of the IMA from 1919 until his death in 1944.

The trophy awarded to the third place chapter in the Stevenson Competition is sponsored by the SCMS. The Society also sponsors the "S. Alden Pendleton Award for Excellence in the Community Responsibility Program of IMA". In addition, the Society provides judges for the selection of the Stuart Cameron and Margaret McLeod Scholarships.

SCMS is also known as the "Society for Continuing Membership Services". This describes your fellow chapter members who are active members of the Stuart Cameron McLeod Society.

The following SCMS members belong to our chapter:

Bill Bevan
Dr. R. Lee Brummet
Steve Drago
Rander Harris
Bob Horky
Raymond H. Johnson
Jim Santaniello
Charles T. Smith, Jr.

North Carolina Triangle Area Chapter 406
Institute of Management Accountants

The Institute of Certified Management Accountants

The Institute of Management Accountants (IMA) established the Institute of Certified Management Accountants (ICMA) in 1972 to implement and administer the Certified Management Accountant (CMA) Program and in 1996 the Certified in Financial Management (CFM) Program. The ICMA evaluates the credentials of candidates, administers the examination, grants certificates, and ensures the CMAs and CFMs continue to meet the professional requirements necessary to retain their certificates in good standing. The ICMA is governed by the ICMA Boards of Regents. The Board members are appointed by the President of the IMA for three-year terms, with one-third of the members appointed each year. The ICMA staff plans and implements the ICMA activities within the framework of policies and procedures established by the ICMA Board of Regents.

All ICMA certification exams are given in a computer based format through Sylvan Technology Centers (see attached). Candidates are authorized for an examination by the ICMA, and then schedule the exam at a Sylvan Technology Center through their national registry. All examination parts (Parts 1, 2CMA, 2CFM, 3 and 4) are now available at all locations on a continuous bases (except Sundays and holidays) Candidates receive immediate feedback on their performance before leaving the testing center. New applicants to the ICMA should seek admission 60-90 days before they wish to take the exam. Continuing candidates should register for parts 4-6 weeks prior to taking the exam.

TESTING SITES FOR:

The Certified Management Accountant (CMA) Exam
The Certified in Financial Management (CFM) Exam

Please contact Thomson Prometric Testing Centers at 1-800-479-6370 or visit their website at www.prometric.com to find the location nearest you.

NORTH CAROLINA

Asheville	828-253-4224
Charolotte	704-364-7758
Gastonia	704-853-2038
Greensboro	336-854-4230
Greenville	252-756-0342
Raleigh	919-846-1933
Wilmington	910-392-0891

REVIEW COURSE FOR:

The Certified Management Accountant (CMA) Exam
The Certified in Financial Management (CFM) Exam

North Carolina Triangle Area Chapter 406
Institute of Management Accountants

The Institute of Certified Management Accountants cont'd

GLEIM

Your IMA Chapter has entered into a partnership with Gleim to ensure your success on the CMA/CFM exams! We are working together to provide you with the necessary tools that you need to prepare for these difficult exams.

Gleim provides CMA/CFM candidates with an extensive self-study course for both the old and new CMA/CFM exams. Our most successful candidates use the Complete CMA System with the Online Course. This system combines books, software, audio reviews, the Online Course, and a personal counselor (a real live person!) to maximize your available study time. Because we identify and focus on your weak areas, you will not spend any more time preparing than is necessary to guarantee success. The Complete CMA System with the Online Course GUARANTEES that you will pass each section on the first try. We are here to save you time and money.

Because of your membership in the North Carolina Triangle Area Chapter, you are eligible for significant discounts (20% to 40%) on any of Gleim's CMA/CFM materials, as well as our Online CPE.

To take advantage of the discounts that are offered, please contact Chris Handley at (800) 874-5346 ext. 134. (chris.handley@gleim.com)

PREPanywhere

Our chapter is also the co-sponsor of an effective preparation tool—PREPanywhere. PREPanywhere is a web-based review course for the CMA and CFM exams that delivers regularly scheduled, live instruction via the internet. For information, go to www.PREPanywhere.com.

North Carolina Triangle Area Chapter 406
Institute of Management Accountants

The Institute of Certified Management Accountants cont'd

North Carolina Triangle Area /Duke University Partnership

Are you ready to:

- join an elite group of professionals who have advanced beyond the practical accounting skill set?
- evolve into a strategic business partner with management-level skills required to maximize value and build quality financial practices into your organization?

If so, you will be interested in The Institute of Management Accountants' (IMA) Certified Management Accountant (CMA) Certification Program and its new CMA Learning System offered at Duke. Call 919-684-6259 or toll free 866-edu-duke. IMA members receive a \$100 discount on entire review program, so please mention your membership upon registering.

Your IMA Chapter has entered into a partnership with Duke University to ensure your success on the CMA/CFM exams! We are working together to provide you with review classes that you need to prepare for these difficult exams. Please click here for more information:
www.learnmore.duke.edu/managerialaccounting

Beginning this Fall, Duke will offer preparatory classes for The Institute of Management Accountants' (IMA) Certified Managerial Accountant exams. Through a partnership with IMA, Duke will offer the CMA Learning System: The Complete Solution to Prepare for the Newly Revised Certified Management Accountant (CMA) Exam.

North Carolina Triangle Area Chapter 406
Institute of Management Accountants

CAROLINAS COUNCIL

Your chapter is a member of the Carolina Council of the Institute of Management Accountants.

The purpose of the Council is to promote and facilitate cooperation and communication between chapters in North and South Carolina in the areas of education and professional development, employment, special activities, new chapter formation, and other activities which broaden the opportunities and benefits of IMA for members in the Carolinas.

The Council sponsors a professional development Accounting Conference each year. Also sponsored by the Council are two-state employment service, chapter management workshops, the Carolinas hospitality room at the IMA International Conference in June each year and an annual intra-council competition to determine the "best" and "most improved" chapters in the Carolinas. The winners receive the Charles W. Lent Trophy and the Carolinas Trophy, respectively.

Each chapter has three official delegates to the Council, but every IMA member is welcome to attend Council meetings.

Founded in 1971 when there were nine chapters and about 2,000 members in the two Carolinas, the Council now includes 22 chapters with more than 4,000 members.

The Carolinas Council (<http://www.imacarolinascouncil.org>) generally offers additional CPE credits each quarter in locations throughout the Carolinas.

The Fall Council Meeting is October 28-29, 2005 in Columbia, SC followed by the Winter Meeting in Gaston, NC from February 2006. The Spring Conference is at Ocean Creek Resort, N. Myrtle Beach, SC from April 27 - 29, 2006.

OUR CHAPTER'S CAROLINAS COUNCIL DELEGATE

Ron Lowell
Past President

North Carolina Triangle Area Chapter 406
Institute of Management Accountants

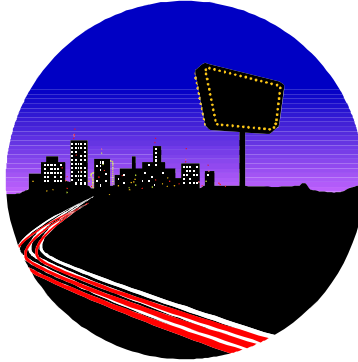
Carolinas Council Board
2005 - 2006

President	Everett S. Walker, Jr.
President Elect	Rick Thompson
Vice President Accounting Conference	Ron Lowell
Committee Member	Heidi Kerns
Committee Member	Hunter Blake
Committee Member	Wendy Whittaker
Committee Member	Jennifer shoffner
Secretary	Frieda Creech
Treasurer	James R. Webb
Vice President Operations	Rick Thompson
Meetings	Open
Publicity	Kimberly J. Coleman
Website	Kathy Santos-Rezendes, CMA
LTS Chapter Services	Ron Nicholson
Vice President Services	Brad Ledford
Audit	Tom Patton
Program Roster	Peggy Reeves
Student Affairs	Christina Cook
Chair Corporate & Academic Development	Tony Caspio
Chair Long Range Planning	Wayne Ledbeter
Member	Jeff D. Moss
Member	Open
Member	Jeff D. Moss
Chair of Professional Education	Vacant
Member	Open
Member	Open
Chair of Chapter Revitalization	Janice Bowers
Member	James T. Santaniello, CMA
Member	Open

North Carolina Triangle Area Chapter 406
Institute of Management Accountants

Member	Open
Member	Open
Chair Nominating Committee	open
SCMS Liaison	Joe Luther
Regional VP	Jeff Moss
Regional Directors	Ron Nicholson (Western NC)
Regional Directors	Tom Patton (Charlotte & Gaston Carolinas)
Regional Directors	Jim Santantiello (NC Triangle & Piedmont Greensboro)
Regional Directors	Heidi F. Kerns, CMA (Spartanburg & Greater Greenville)
Regional Directors	Ronald D. Nicholson, CMA (Catawba Valley & Piedmont Winston-Salem)
Regional Directors	Janice Bower (Florence & Wilmington)
Regional Directors	Janice Bower (Charleston)
Regional Directors	Robyn Verdery (Augusta & Columbia)

North Carolina Triangle Area Chapter 406
Institute of Management Accountants



IMA is coming to Las Vegas

Make plans to attend the 87th Annual IMA Conference & Exposition

With almost 1,000 attendees each year, IMA's Annual Conference & Exposition is the definitive event for managerial finance and accounting professionals. Take advantage of four days of interactive sessions that will meet your professional development needs. This is the IMA event you don't want to miss.

Mark your calendars for June 17 - 21, 2006

NC TRIANGLE #406 MEMBERSHIP

2005 - 2006

North Carolina Triangle Area Chapter 406
Institute of Management Accountants

Member Directory

Kenneth Acres

Mr. Kenneth C. Acres
Progress Energy
107 Traders Mill Run
Kenly, NC 27542-7513
(888) 205-3186
fax (919) 998-9000
kacres@srs.net

L. Carl Allen

Mr. L. Carl Allen III

2516 Wyndemere Ct
Hillsborough, NC 27278
(919) 732-4254
pcallen@mindspring.com

Harold Alvarez

Mr. Harold Alvarez
General Mills
Financial Analyst
One General Mills Blvd W04D
Golden Valley, MN 55426
harold.alvarez@genmills.com

Oscar Adkins

Mr. Oscar C. Adkins Jr. CMA
Bowe Bell and Howell
1212 Elysian Way
Rougemont, NC 27572
(919) 767-3512
oscara33@hotmail.com

William Allen

Mr. William B. Allen CPA FLM
Commercial Casualty Ins Co -NC
1010 Boulderivista WAY
Norcross, GA 30043
wba.allen@worldnet.att.net

Deanna Anderson

Mrs. Deanna O. Anderson
East Coast Metal Distributors Inc
Assistant Senior Controller
1313 S Briggs Ave
Durham, NC 27703
(919) 598-5030
fax (919) 596-1667
danderson@ecmdi.com

Harry Albert

Mr. Harry L. Albert Jr CPA CMA
ELECTRICAL EQUIPMENT CO
Controller
1440 Diggs Dr
Raleigh, NC 27603-2755
(919) 828-5411
fax (919) 856-1595
harry.albert@eeco-net.com

Mr. Steven M. Allman CMA
IBM CORP
1631 Heirloom Wy
Longmont, CO 80501
303-924-9419
allmans@us.ibm.com

Steven Allman Frederick Ange

Mr. Frederick R. Ange Jr CFM
PARKER HANNIFIN CORP
1109 Braemar Court
Cary, NC 27511
216 896-2820
fax 216 896-4018
freda101@aol.com

Paula Albertson

Ms. Paula J. Albertson
CENSUS METERING SYSTEMS
204 Highgate Cir
Wake Forest, NC 27587-5117
(919) 870-3304
paula.albertson@sensus.com

Ronald Altman

Mr. Ronald W. Altman Jr
Biomerix Inc
402 Accolade Dr
Cary, NC 27513-1761
(919) 620-2243
fax (919) 620-2678

Terri Anthony

Mrs. Terri J. Anthony
PhyAmerica Government Svcs Inc
8417 Lunar Stone Pl
Raleigh, NC 27613
(919) 768-4634
terrianthony@nc.rr.com

Richard Arnold

Mr. Richard Arnold
Training Network
7103-315 Plumleaf Road
Raleigh, NC 27613
(919) 767-1604
fax (704) 937-9173
rarnold3@nc.rr.com

Lizabeth Austen

Dr. Lizabeth A. Austen CMA CPA
EAST CAROLINA UNIVERSITY
1744 Beaumont Dr.
Greenville, NC 27858-4616
(252) 328-6102
austenlisa@msn.com

David Baldwin

Mr. David A. Baldwin
Saffron Technology
1600 Perimeter Park Drive
Morrisville, NC 27560
919-468-8201
fax 919-465-0292
dbaldwin@saffrontech.com

Alice Assaid

Ms. Alice B. Assaid
BLUE CROSS BLUE SHIELD OF NC
Manager Cost Accounting
PO Box 2291 HQ3
Durham, NC 27702-2291
(919) 765-3588
fax (919) 765-7107
alice.assaid@bcbsnc.com

Jonathan Aves

Mr. Jonathan S. Aves
LIBERTY FABRICS INC
4130 Willow Knoll Lane
Winston Salem, NC 27106
(919) 639-6151

Julie Barefoot

Miss. Julie A. Barefoot
64 Woods Crossroads Rd
Benson, NC 27504
jabarefoot@ipass.net

North Carolina Triangle Area Chapter 406
Institute of Management Accountants

Mary Auen

Ms. Mary E. Auen CFM CMA
BIOMERIEUX INC
1301 Shady Lane
Durham, NC 27712
(919) 620-2960
fax (919) 620-2788
maryauen@juno.com

Ted Bachman

Mr. Ted A. Bachman
TED BACHMAN CONSULTING
4328 Willow Lake Rd
Raleigh, NC 27616-8722
(919) 606-3477
tedbachman@mindspring.com

Bobby Barfield

Mr. Bobby G. Barfield
3301 Glade Spring Ct
Raleigh, NC 27612-4157

William Aull

Mr. William B. Aull
IBM
Professional Financial Analyst
3039 Cornwallis Rd Bldg 501 Flr2
PO Box 12195 Office E201
Durham RTP, NC 27709
(919) 543-7822
aull@us.ibm.com

Charles Backus

Mr. Charles B. Backus CPA
8713 Zinfandel Place
Raleigh, NC 27615
919-931-3944
charles.backus@prodigy.net

Belinda Lea Barnhart

Ms. Belinda Lea Barnhart
CAMBIARE CONSULTING
106 Craven Hill Ct
Raleigh, NC 27606-8426
fax (919) 387-7327
belindalea@aol.com

Sergio Barona

Mr. Sergio S. Barona
SOUTHERN LITHOPLATE INC
6216 Clamshell Dr
New Light Hill Sub
Wake Forest, NC 27587-5772
(919) 556-9400

Levi Beckwith

Mr. Levi A. Beckwith
SHAW UNIVERSITY
2321 Foxtrot Dr
Raleigh, NC 27610
(919) 546-8351
lbeckwith@shawu.edu

C Berryhill

Mr. C D Berryhill
Hudson Global Resources
3901 Poplarwood Ct
Suite 220
Raleigh, NC 27604
(919) 878-5005x
fax (919) 878-5019
dberryhill@nc.rr.com

Neil Barratt

Mr. Neil P. Barratt
Bayer Corp
714 Walcott Way
Cary, NC 27519
(919) 316-6322
fax (919) 316-6685
landnbarratt@aol.com

Joseph Belnak

Mr. Joseph J. Belnak CMA
NC DEPT -PUBLIC EDUCATION
4225H Brockton Dr
Raleigh, NC 27604-2686
(919) 715-1452

Jenny Berryhill

Miss. Jenny L. Berryhill
NCSU
5126 D Ft Sumter Rd
Raleigh, NC 27606
jlberryh@unity.ncsu.edu

Stephanie Batchelor

Miss. Stephanie E. Batchelor
Delta Gamma
5408 Shoreline Ct
Holly Springs, NC 27540
sebatcbe@ncsu.edu

Susan Bennett

Mrs. Susan H. Bennett CMA CPA
PROGRESS ENERGY, INC.
PO Box 478
120 Harris St
Wendell, NC 27591-8023
(919) 546-5995
susan.bennett@pqnmail.com

J Betts

Mr. J A. Betts CLU CPA
ERNST & YOUNG LLP
3209 Millstream Place
Raleigh, NC 27609-7057

Jacinta Bazemore

Mrs. Jacinta R. Bazemore
IBM CORP
115 Settlers Mill Ln
Durham, NC 27713-8541
(919) 254-0740
fax (919) 544-5119
jacinta@us.ibm.com

Stephanie Berger

Ms. Stephanie A. Berger
NCSU
ES King Village Apt O 13
Raleigh, NC 27607

William Bevan

Mr. William K. Bevan
N CAROLINA STATE UNIV
201 Drakewood Pl
Apex, NC 27539
(919) 661-3124
fax (919) 367-8003
billbevan@aol.com

North Carolina Triangle Area Chapter 406
Institute of Management Accountants

Michael Billings

Mr. Michael L. Billings
NACCO Materials Handling Group I
140 E Longmeadow Rd
Greenville, NC 27834-9007
(252) 931-5415
fax (252) 931-5407
agmbilli@nmhg.com

Laura Blohm

Mrs. Laura J. Blohm CPA
Progress Energy
709 Bonhurst Drive
Holly Springs, NC 27540-8746
(919) 546-6537
fax (919) 546-2962
laura.blohm@pgnmail.com

Eugene Bowers

Mr. Eugene S. Bowers III CMA
ESB Management Services Inc
1407 Granada Dr
Raleigh, NC 27612-5109
(919) 274-6209
esbiii@bellsouth.net

Lawrence Blake

Mr. Lawrence W. Blake CMA CPA
Partner
UNION
PO Box 58081
Fayetteville, NC 28305-8081
(919) 486-5772
fax (910) 485-6177

Darl Boddorf

Mr. Darl D. Boddorf CMA
COTY, LLC
100 Poppleford Place
Cary, NC 27511-3008
(919) 895-5483
dsevert@nc.rr.com

Jeffrey Boyd

Mr. Jeffrey S. Boyd CMA CPA
STATE EMPLOYEES CREDIT
134 Shady Meadow Circle
Cary, NC 27513-9103

Melissa Bledsoe

Melissa Bledsoe
159 ROUTE 202 APT 6
SOMERS, NY 10589
(914) 766-0176
mbledsoe@us.ibm.com

Robert Boone

Mr. Robert D. Boone
BOONE CONSULTING
2215 Wheeler Rd
Raleigh, NC 27607-6646
(919) 571-7828
rdboone2000@yahoo.com

James Boylan

Mr. James H. Boylan Jr
TROXLER ELECTRONIC LABS
1618 Medfield Road
Raleigh, NC 27607-4726
(919) 485-2204
troxact@troxlerlabs.com

Edward Blocher

Dr. Edward J. Blocher CMA CPA
UNIV OF NORTH CAROLINA
Professor
Kenan-Flagler School of Bus
McColl Bldg CB3490
Chapel Hill, NC 27599-0001
(919) 962-3200
fax (919) 962-4727
blochere@unc.edu

Jane Bouchon

Mrs. Jane F. Bouchon
1520 Tradescant Ct
Raleigh, NC 27613
jane.bouchon@tycohealthcare.com

Thomas Brafford

Mr. Thomas N. Brafford
1407 Springmoor Cir
Raleigh, NC 27615-5703

Venia Braswell

Mrs. Venia J. Braswell
MAGNETI MARELLI USA
TREASURER
1911 Phillips Drive
Sanford, NC 27330-7016
(919) 775-6386
fax (919) 775-6439
vbraswell@marelliusa.com

R Lee Brummet

Dr. R Lee Brummet CPA
UNIV OF NORTH CAROLINA
810 Kenmore
Chapel Hill, NC 27514-1446

James Burke

Mr. James L. Burke CMA CPA
NC DEPT OF STATE
8709 Catamaran Dr
Raleigh, NC 27615
(919) 807-2383
fax (919) 807-2398

North Carolina Triangle Area Chapter 406
Institute of Management Accountants

Jeffrey Briggs

Mr. Jeffrey S. Briggs
4613 Batavia Ct
Raleigh, NC 24604
jsbrigg@yahoo.com

Ann Bublitz

Ms. Ann E. Bublitz CMA
1220 Tacketts Pond Dr
Raleigh, NC 27614-7825
(919) 845-6847
fax 919-845-6863
annbublitz@earthlink.net

Martha Burris

Mrs. Martha H. Burris
SIEMENS PTD INC
6401 Ridgemount Street
Wake Forest, NC 27587
(919) 325-7049
fax (919) 325-7057
marty.burris@siemens.com

Gretchen Britt

Ms. Gretchen S. Britt CMA CPA
REVLON INC
7924 River Dare Ave
Youngsville, NC 27596-9586
(919) 603-2852

Franklin Buchheit

Mr. Franklin L. Buchheit
DO NOT USE

Aimee Bushiri

Ms. Aimee M. Bushiri
Cooper Tools Division
5901 Clarks Fork Dr
Raleigh, NC 27613-2002
(919) 783-2127
fax (919) 783-2185

Bruce Broadbelt

Mr. Bruce D. Broadbelt CMA
SCOTT MEDICAL GROUP
5416 Lake Edge Dr
Holly Springs, NC 27540-9341
(919) 768-4147
fax (919) 383-0355
bbroadbelt@mindspring.com

Robert Buckenham

Mr. Robert A. Buckenham CMA
STATE OF NORTH CAROLINA
721 Bayberry Ct
Nashville, NC 27856
(252) 399-2147
buckenham@earthlink.net

Kimberly Byrd

Miss. Kimberly B. Byrd CMA
PROGRESS ENERGY INC
6680 English Ivy Ln
Raleigh, NC 27615-6303
919-546-2789

George Cahill

Mr. George P. Cahill CPA
3001 Sandia Drive
Raleigh, NC 27607-3153
(919) 782-7570
fax (919) 782-7570
gcahill@carolinadoor.com

David Campbell

Mr. David Campbell
130 Brentfield Loop
Morrisville, NC 27560-6871
(919) 677-0327
fax (919) 677-1732
dcampbell@lighthouse-tech.co

Nick Carra

Mr. Nick Carra
DIOSYNTH RTP
1518 N Gleneagle Dr
Garner, NC 27529-4303
(919) 337-4222
nick.carra@diosynth-rtp.com

Mary Caldwell

Ms. Mary L. Caldwell
COOPER TOOLS
CMA
4109 Rockside Hills Dr
Raleigh, NC 27603
(919) 387-2713
mary.caldwell@coopertolls.com

Mary Canady

Ms. Mary J. Canady CFM CMA
IBM CORP
2616 Meadow Star Ct
Raleigh, NC 27615-8029
(919) 486-8893
marycan@us.ibm.com

D Steven Carraway

Mr. D Steven Carraway CMA CPA
D STEVEN CARRAWAY CPA
315 Arrundale Drive
Cary, NC 27511-4409
fax (919) 467-8026
dscarraway@ipass.net

North Carolina Triangle Area Chapter 406
Institute of Management Accountants

Michael Calvello

Mr. Michael J. Calvello CMA
PROGRESS ENERGY
2436 Millstone Hbr
Raleigh, NC 27603-3966
(919) 546-2248
mike.calvello@cplc.com

Christine Cameron

Ms. Christine P. Cameron
GENERAL TELEPHONE OF THE SOUTH
108 Clancey Court
Durham, NC 27712-9219
(919) 317-5813
fax (919) 317-5634

Charles Casteen

Mr. Charles C. Casteen
FOOD MASTERS INC
PED
Acctng Mgr
PO Box 58399
Raleigh, NC 27658-8399
(919) 876-0957
fax (919) 876-0958
chizarlesc@yahoo.com

William Casteen

Mr. William R. Casteen
FOOD MASTERS INC
8204 Kingswood Ct
Raleigh, NC 27613-4208
(919) 876-0957

Ann Castellloe

Mrs. Ann P. Castellloe
3822 Summerwood Ct
HAYWOOD
Raleigh, NC 27613
castello@meredith.edu

John Cerqueira

Mr. John Cerqueira CMA
East Coast Metal Distributors In
1313 S Briggs Ave
Durham, NC 27703-5049
(919) 598-5030
jcerqueira@ecmdi.com

Elizabeth Carr

Miss. Elizabeth Carr
1127 Brisbane Woods Way
Cary, NC 27511
aecarr@unity.ncsu.edu

Kendall Carr

Mr. Kendall A. Carr CPA
LUCOR INC
1909 Thorpshire Drive
Raleigh, NC 27615
(919) 828-9511
ken.carr@lucorinc.com

Richard Cesarski

Mr. Richard C. Cesarski CMA
QUINTILES INC

306 Tattenhall Dr
Apex, NC 27502-4419
(919) 998-7407

Tommy Charurat

Mr. Tommy P. Charurat CFM CMA
IBM CORPORATION
100 Dumont Court
Apex, NC 27502-3858
(919) 254-7273
fax (919) 543-9196
master.strategist@hotmail.com

Yuang-Sung Chen

Mr. Yuang-Sung A. Chen
NORTH CAROLINA STATE UNIV

Professor
PO Box 8113
Raleigh, NC 27695-8113
(919) 515-3951
al_chen@ncsu.edu

Arthur Cielo

Mr. Arthur G. Cielo Jr
NC BIOTECHNOLOGY CTR
2508 Village Grove Rd
Raleigh, NC 27613-3657

Tyra Carter

Miss. Tyra D. Carter
11186 Slider Dr
Raleigh, NC 27614
tyracarter@aol.com

Cynthia Cassel

Miss Cynthia M. Cassel
600 Cates Ave Apt 3A
Raleigh, NC 27606
cmcassel@unity.ncsu.edu

Joseph Clancy

Mr. Joseph W. Clancy
WYETH-LEDERLE VACCINES &

Plant Controller
4300 Oak Park
Sanford, NC 27330-9550
(919) 775-7100
fax (919) 774-1142

Eileen Clark

Ms. Eileen G. Clark CFM CMA
ADVANCED MICRO DEVICES
3101 Sweet Autumn Cove
Austin, TX 78735-1525
(512) 602-7529
eileen.lockerd@cirrus.com

J Clements

Mr. J G. Clements CPA
KOONCE WOOTEN &

LLP
Partner
PO Box 17806
Raleigh, NC 27619-7806
(919) 782-9265
fax (919) 783-8937

Christopher Cline

Mr. Christopher L. Cline
10824 Cokesbury Ln
Raleigh, NC 27614
clinec@bellsouth.net

North Carolina Triangle Area Chapter 406
Institute of Management Accountants

Donald Clough

Mr. Donald H. Clough CMA
NORTEL NETWORKS
7 Mill Haven Ct
Durham, NC 27713-6038
(919) 992-4551
dhclough53@yahoo.com

Robert Collier

Mr. Robert R. Collier CCA
207 Monticello Avenue
Durham, NC 27707-3910
2collier@gte.net

Shannon Cosart

Mr. Shannon W. Cosart CFM
IBM
22 Dardanelle Ln
Durham, NC 27713
(919) 543-7599
scosart@us.ibm.com

John Coker

Mr. John Coker
1225 1/2 Duplin Rd
Raleigh, NC 27607
jwcoker@unity.ncsu.edu

Dawn Conner

Dawn M. Conner
107 Hidden Oaks Dr
Apt 1D
Cary, NC 27513
919-486-8824
dawnmc@us.ibm.com

Mark Covington

Mr. Mark L. Covington
10427 Brimstone Dr
Fort Mill, SC 29715
mark81673@yahoo.com

Cindy Cole

Ms. Cindy D. Cole
NOVO NORDISK
23 Trailing Oak Trl
Clayton, NC 27520-5307
(919) 550-2206
fax (919)550-3670
cic@novonordisk.com

Christina Cook

Mrs. Christina P. Cook
5986 Mya Kra Ct
Raleigh, NC 27616
wchrisy@hotmail.com

W David Cozart

Mr. W David Cozart CPA
NORTEL NETWORKS
108 Combs Ct
Wendell, NC 27591-7723
(919) 992-3585
fax (919) 992-1625

Melissa Cole

Ms. Melissa E. Cole
BD
Fin Analyst
21 Davis Dr
Durham, NC 27709
(919) 597-6130
melissa_cole@bd.com

Lindsay Cordova

Ms. Lindsay N. Cordova
1908 Grovepoint Ct
Raleigh, NC 27609
incordov@unity.ncsu.edu

Gary Cram

Mr. Gary P. Cram VPP
BUEHLER MOTOR INC
5229 Deergrass Ct
Raleigh, NC 27613-6568
(919) 469-8522

April Creech

Miss. April G. Creech
6900 Crescent Moon Ct Apt 207
Dis
Raleigh, NC 27606
agcreech@unity.ncsu.edu

Jimmy Crump

Mr. Jimmy A. Crump
REICHHOLD INC

Po Box 13326
Durham, NC 27709-3326
(919) 558-2794
fax (919) 990-7670
jcrump2356@aol.com

Carol Daugherty

Mrs. Carol L. Daugherty
Siemens Power Transmission &

3520 Hawks Nest Ln
Rougemont, NC 27572-7275
(919) 325-7027
fax (919) 325-7057
carol.daugherty@siemens.com

North Carolina Triangle Area Chapter 406
Institute of Management Accountants

David Creedon

Mr. David Creedon CMA
LOGISTICS CO
3312 Mandalay St
Fayetteville, NC 28303-4619
(910) 323-9500
fax (910) 323-9500
DaveCreedon@msn.com

Cecilia Csapo

Mrs. Cecilia Csapo
COASTAL PHYSICIAN GROUP INC
10914 S. Lowell Rd
Bahama, NC 27503
(919) 383-0355
fax (919) 383-3609
ccsapo@phyamerica.com

Colby Daughtry

Mr. Colby Daughtry
MCGLADREY & PULLEN LLP
Partner
Post Office Box 10366
Raleigh, NC 27605-0366
(919) 781-1055

Thomas Crotty

Mr. Thomas J. Crotty
JOHN DEERE CO
8708 Murray Hill Drive
Raleigh, NC 27615-2530
(919) 804-2384
fax (919) 804-2424
CrottyThomasJ@johnDeere.com

Richard Daigle

Mr. Richard J. Daigle
VR BUSINESS BROKERS
Owner
8024 Glenwood Ste 115
Raleigh, NC 27612
fax (919) 781-9323

Jean Davidson

Ms. Jean N. Davidson CMA CPA
SAS INST
10701 Old Brook Ct
Raleigh, NC 27614
(919) 531-8203
fax (919) 677-4444
jean.davidson@sas.com

Teresa Crouch

Mrs. Teresa D. Crouch CPA
GREGORY POOLE EQUIPMENT CO
Accountant
4807 Beryl Road
Post Office Box 469
Raleigh, NC 27602-0469
(919) 890-4230
fax (919) 890-4364
crouch@gregpoole.com

Finbar Daly

Mr. Finbar Daly ACA CMA
PERGO INC
905 Norwood Ln
Apex, NC 27502-1656
(919) 773-5062
fax (919) 773-6003
BARRY.DALY@PERGO.COM

Ginny Davis

Mrs. Ginny C. Davis CMA CPA
105 Culcross Ct
Cary, NC 27513-4939
gindavis@bellsouth.net

Paula Davis

Ms. Paula B. Davis CMA
4720 Hilltop Needmore Rd
Fuquay Varina, NC 27526-9262
paulabdavis@earthlink.net

Kenneth DeHaven

Mr. Kenneth L. DeHaven
Santa Fe Natural Tobacco Co
1409 Ballyclare Ct
Raleigh, NC 27614
(919) 690-0880
ken.dehaven@polyone.com

Masceo Deschamps

Mr. Masceo S. Deschamps
CAROLINA POWER & LIGHT CO
Director
PO Box 1551 CPB 10A5
Raleigh, NC 27602-1551

R. Scott Day

Mr. R. Scott Day CMA
1829 Tarbert Drive
Cary, NC 27511
(919) 486-8129
fax (919) 486-8944
rsd@us.ibm.com

Frank Delucia

Mr. Frank P. Delucia
MILES INC
12451 Canolder St
Raleigh, NC 27614-8822
(919) 316-6320
frank.delucia.b@bayer.com

David Dietz

Mr. David R. Dietz
GlaxoSmithKline
3544 Dewing Dr
Raleigh, NC 27616-8956
(919) 4832021
fax (919) 326-6376
ddietz@propoint.com

North Carolina Triangle Area Chapter 406
Institute of Management Accountants

Brice Debnam

Mr. Brice H. Debnam
1430 Collegiate Cir Apt 104
Raleigh, NC 27606
bhdebnam@unity.ncsu.edu

John Dennis

Mr. John C. Dennis CFM CMA
6433 Lakeland Dr
Raleigh, NC 27612-6524
fax (919) 841-6709
jcdennis@worldnet.att.net

Paul DiPirro

Mr. Paul D. DiPirro
STREET CONSTRUCTION CO
6633 Morganford Road
Charlotte, NC 28211
(704) 424-9988
fax (704) 364-0456
paul@jjmachinerytransport.com

Guy DeCarlucci

Mr. Guy R. DeCarlucci CMA
DUKE PRIVATE DIAGNOSTIC CLINIC
5505 Orchid Hill Dr
Raleigh, NC 27613-1420
(919) 668-5121

Angela DePay

Ms. Angela M. DePay
6808 Spring Run Cir
Raleigh, NC 27615

Madalina Dobra

Ms. Madalina Dobra
5307 rebecca lynn lane
raleigh, NC 27613
madydobra@hotmail.com

Andrew Doll

Mr. Andrew C. Doll CPA
MTS SENSORS DIVISION
Controller
3001 Sheldon Dr
Cary, NC 27513
(919) 677-2338
drew.doll@mts.com

Tracie Dugdell

Ms. Tracie J. Dugdell CMA
IBM CORP
7125 Breckenridge Ave
Raleigh, NC 27615-6606
(919) 486-8993
love2quilt@att.net

Tanya Edmonds

Ms. Tanya K. Edmonds
Hudson Global Resources
Acct Executive
3109 Poplarwood Ct Ste 220
Raleigh, NC 27604
(919) 878-5005
fax (919) 878-5019
tanya.edmonds@hudson.com

Thomas Dow

Mr. Thomas C. Dow CMA CPA
518 Loblolly Dr
Durham, NC 27712
kis@nc.rr.com

Sue Durphy

Ms. Sue A. Durphy
AJILON FINANCE
Manager
5565 Centerview Dr #214
Raleigh, NC 27606-3563
(919) 859-5550
fax (919) 859-5575
sdurphy@aocnet.com

Bradford Eggleston

Mr. Bradford A. Eggleston
NCSU
2100 Walftech Ln Unit 301
Raleigh, NC 27603

Stephen Drago

Mr. Stephen J. Drago CMA CPA
ULTIMUS INC
5205 Longwood Dr
Durham, NC 27713-8013
(919) 678-0900
fax (919) 490-6497
dragosss@aol.com

R Thomas Dwyer

Mr. R Thomas Dwyer III
INFORMATION RESOURCES GROUP
125 Northpond Ln
Winston Salem, NC 27106-2577
(336) 922-1759

Michael Elia

Mr. Michael R. Elia CPA
8417 Arbory Hill Ct
Dublin, OH 43017-9788

North Carolina Triangle Area Chapter 406
Institute of Management Accountants

Rex Draughn

Mr. Rex Draughn CFM CIA CMA
FLM
MANAGEMENT INSIGHTS INC
4223 High Star Lane
Dallas, TX 75287
(972) 755-2016
fax (972) 755-2080
rdraughn@sbcglobal.net

David Eckstine

Mr. David A. Eckstine

MACKAY COMMUNICATIONS INC
7333 Churchill Dr
Wake Forest, NC 27587-8558
(919) 850-3046
fax (919) 850-3076
david.eckstine@mackaycomm.com

Carolyn Elliott

Ms. Carolyn J. Elliott CFE CPA

Auditor
PO Box 6054
Raleigh, NC 27628-6054
cell7@juno.com

Linda Elliott

Ms. Linda P. Elliott
Elliott Consulting Services
134 Salem Church Rd
Hurdle Mills, NC 27541-9126
(336) 599-3122
fax (336) 599-6006
lindaelliott@systemsconversion.com

Edith Ennis

Ms. Edith E. Ennis CMA
PROGRESS FUELS CORP
3409 Edwards Drive
Plano, TX 75025
edithennis@mindspring.com

Gonzalo Fernandez

Mr. Gonzalo Fernandez
5805 Partridge Lane
Raleigh, NC 27609-4127

Ann Ellis

Ms. Ann G. Ellis CPA
1701 Beacon Valley Dr
Raleigh, NC 27604
(919) 815-2613
ann.ellis@duke.edu

Kenneth Evancie

Mr. Kenneth G. Evancie
2215 Hollowgate Rd
Raleigh, NC 27614-8607

Linda Ferreri

Dr. Linda B. Ferreri CMA
PEACE COLLEGE
Assistant Professor
15 E Peace St
Raleigh, NC 27604-1176

David Ellis

Mr. David W. Ellis CIA
MARTIN MARIETTA MATERIALS INC
Director Internal Audit
2710 Wycliff Rd
Raleigh, NC 27607-3033
(919) 510-4791
fax (919) 510-4780
dave.ellis@martinmarietta.com

Kimberly Evans

Kimberly N. Evans CPA
7412 Lakefall Dr
Wake Forest, NC 27587
(919) 767-7795
kim.evans@renesas.com

Joseph Fields

Mr. Joseph M. Fields
Spherion
5001 S Miami Blvd Ste 320
Durham, NC 27703
(919) 474-3215
fax (919) 941-0073
josephfields@spherion.com

Nicholas Ellis

Mr. Nicholas L. Ellis CMA
KIMLEY-HORN AND ASSOCIATES
INC
3328 Alleghany Dr
Raleigh, NC 27609

Mark Evrard

Mr. Mark F. Evrard
COOPER INDUSTRIES INC
1806 Holly St
Apex, NC 27502-1524
(919) 783-2129
fax (919) 783-2185
mark.evrard@coopertools.com

Nona Fisher

Mrs. Nona D. Fisher
BOTTOM LINE ACCTG
224 Addison St
Fayetteville, NC 28314-1253
(910) 424-0004
fax (910) 424-1803
nonafisher@aol.com

North Carolina Triangle Area Chapter 406
Institute of Management Accountants

Ronald Fleming

Mr. Ronald A. Fleming CIA CMA CPA
9 Tipperary Terr
Ringoes, NJ 08551
(240) 601-1414
fax (775) 201-7638
RAFleming@aol.com

Maggie Lisa Frady-Davis

Mrs. Maggie Lisa Frady-Davis CBA
6205 Sweden Dr
Raleigh, NC 27612-1907
lfrady@nortelnetworks.com

Brent Galloway

Mr. Brent E. Galloway
CLOSURE MEDICAL CORP
525 Merrie Road
Raleigh, NC 27606-3813
(919) 877-2188
fax (919) 790-1041
bgalloway@closuremed.com

Rhonda Flowers

Mrs. Rhonda J. Flowers
CMA
124 Aspen Cir
Clayton, NC 27520
(919) 515-2011
rdjohnson92901@yahoo.com

Michael Franken

Mr. Michael H. Franken CIS

7004 Tanbark Way
Raleigh, NC 27615-5359
(919) 847-7917
fax 801-729-6503

Shannon Gamber

Ms. Shannon D. Gamber CFM

IBM INC
8828 Kaplan Woods Way
Wake Forest, NC 27587
hivre@excite.com

Karon Fowler

Ms. Karon D. Fowler
*PROGRESS ENERGY CAROLINAS
INC*
Project Analyst
410 S Wilmington St PEB 9A
Raleigh, NC 27601
(919) 546-3035
fax (919) 546-2826
karon.fowler@pgnmail.com

Ronald Frydach

Mr. Ronald J. Frydach
NORTHERN TELECOM INC
101 Fox Briar Ln
Cary, NC 27511-8305
(919) 992-4003
fax (919) 992-2147
RFrydach@nc.rr.com

Xiang Gao

Ms. Xiang Gao CFM CMA
NC Dept of Health & Human Svcs
3301 Drexel Hill Ct
Apex, NC 27539
(919) 857-4270
shanna.gao@ncmail.net

Glenn Fox

Mr. Glenn R. Fox CPA
LL BUILDING PRODUCTS, INC.
Controller
295 McKoy Road
Burgaw, NC 28425
910-259-6374
fax 910-296-2361
gfox@gaf.com

Lucy Gallo

Ms. Lucy L. Gallo CPA
THOMAS KNIGHT TRENT KING & CO

3514 Westover Rd
Durham, NC 27707-5031
(919) 383-8585x
fax (919) 382-3290
lgallo@tktk.com

Jaime Garcia

Mr. Jaime Garcia
PROGRESS ENERGY
205 Middlestone Court
Wake Forest, NC 27587-5331
(336) 364-6319
boilerjg@aol.com

Eugene Gardner

Mr. Eugene R. Gardner
Acroprint Time Recorder Company
Controller
5640 Departure Dr
Raleigh, NC 27616
919-872-5800
fax 919-850-0720
ggardner@acroprint.com

Thomas Gebbia

Mr. Thomas Gebbia Jr CMA CPA
HONEYWELL
Controller
338 Pea Ridge Rd
PO Box 166
Moncure, NC 27559-0166
(919) 545-3728
fax (919) 542-1258
tom.gebbia@honeywell.com

Tamer Gheit

Mr. Tamer A. Gheit
BRANSH BANKING & TRUST CO
3600 207 Cumberland Creek Rd
Raleigh, NC 27613
(919) 319-4800
nytots1@aol.com

North Carolina Triangle Area Chapter 406
Institute of Management Accountants

Edna Garrett Parker

Mrs. Edna D. Garrett Parker
NORTEL NETWORKS
5010 Linden Oaks Ave
Durham, NC 27713-6560
(919) 992-8719
eparker9@nc.rr.com

Michael George

Mr. Michael A. George CPA
FIRSTCAROLINACARE, INC.
4 Pin Oak Court
Pinehurst, NC 28374
(910) 215-5356
fax (910) 215-5256
mgeorge@firsthealth.org

Arthur Gillum

Mr. Arthur G. Gillum CPA
6813 Knotty Pine Drive
Chapel Hill, NC 27517-8660

Marie Gaster

Mrs. Marie H. Gaster CMA CPA
CHILD CARE NETWORKS INC
21 Crosswinds Estates
Pittsboro, NC 27312-9731
(919) 542-6644
fax (919) 542-0902
marie@childcarenetworks.org

Teresa George

Mrs. Teresa M. George CMA
IBM CORP
345 Bandoek Dr
Durham, NC 27703-9221
fax (919) 543-3255

Vicky Gipson

Ms. Vicky M. Gipson
N C BIOTECHNOLOGY CENTER
15 Alexander Dr
PO Box 13547
Research Triangle Pk, NC
27709-3547
(919) 541-9366

David Gay

Mr. David R. Gay
WEST POINT STEVENS
110 Steelman Road
Southern Pines, NC 28387-6825
(910) 369-4109

Paulette Germain-Bekolo

Mrs. Paulette Germain-Bekolo
Duke Univ
107 B Barksdale Dr
Chapel Hill, NC 27516
(919) 613-7303
pbekolo@msn.com

Jerry Godwin

Mr. Jerry E. Godwin
WILSONMEDICAL CENTER
5240 Quaker Rd
Wilson, NC 27893-8385
(252) 399-8154
fax (252) 399-8778
jgodwin@cocentral.com

Sandra Godwin

Mrs. Sandra T. Godwin
CAPE FEAR VALLEY HEALTH
SYSTEM
5005 Gerbing Cr
Fayetteville, NC 28306-9316
(910) 609-6852
fax (910) 609-5145

Joanne Goodoff

Ms. Joanne E. Goodoff CIA CMA
CAROLINA POWER & LIGHT CO
1604 Bellechasse Dr
Raleigh, NC 27615-7401
(919) 546-4169
fax (919) 546-2063

Robert Green

Mr. Robert A. Green CMA
1765 Dickens Cv
Germantown, TN 38139-3600
(901) 434-8047
fax (901) 434-8225
ragreen2@fedex.com

Anthony Goff

Mr. Anthony B. Goff CMA CPA
Sem Products Inc
651 Michael Wylie Dr
Charlotte, NC 28127
(704) 716-8523
fax (704) 522-7008
brian.goff@invensys.com

Wm Michael Gorman

Mr. Wm Michael Gorman CMA CPA
1000 Buckingham Way
Apex, NC 27502-9339
fax (919) 782-9113

William Green

Mr. William H. Green
927 Durham Road
Roxboro, NC 27573-5901

North Carolina Triangle Area Chapter 406
Institute of Management Accountants

Robert Goldman

Mr. Robert C. Goldman CFM CMA
203 Stoneleigh Dr
Cary, NC 27511-6370

Edith Graham

Ms. Edith L. Graham CBM
COOPER HAND TOOLS
900 Vickie Dr
Cary, NC 27511
(919) 387-2712

fax (919) 387-2711
edie.graham@coopertools.com

Lori Greenstein

Ms. Lori L. Greenstein
North Carolina Biotechnology Ct
Sr VP for Corp Admin & CFO
15 Alexander Dr PO Box 13547
Res Triangle Park, NC 27709-
3547

(919) 549-8850x
fax (919) 549-9710
lori_greenstein@ncbiotech.org

George Golenbiewski

Mr. George P. Golenbiewski CIA CMA
118 Felspar Way
Cary, NC 27511
ggolenbiewski@aol.com

Scott Gray

Mr. Scott Gray
UNIV OF PHOENIX ONLINE
9400 Springdale Drive
Raleigh, NC 27613-7544
fax (919) 546-2063
scottmgray@earthlink.net

Lauren Greer

Miss. Lauren Greer
North Carolina State University
435 Drummond Dr
Raleigh, NC 27609
kigreer@ncsu.edu

Jim Griffin

Mr. Jim L. Griffin CFM CMA
401 Trappers Run Dr
Cary, NC 27513-4834

Joanne Grussemeier

Ms. Joanne T. Grussemeier CMA
101 Cassidy Ct
Cary, NC 27511-5593
(919) 461-9883
fax (919) 993-4421
jgrusse@us.ibm.com

Laura Hagel

Miss. Laura E. Hagel
NC ST UNIV
629 Fairway Ridg Dr
West Jefferson, NC 28694
(919) 835-1197
lehagel@unity.ncsu.edu

Craig Griffith

Mr. Craig C. Griffith
Affiliated Computer Services, In
8017 Wavendon Court
Raleigh, NC 27615-4614
(919) 676-3444
fax (919) 676-3444
cgriffith@nc.rr.com

Lawrence Guyette

Mr. Lawrence T. Guyette CMA
AMERLINK LTD
4248 Olde Rass farm Rd
Rocky Mount, NC 27804
(252) 977-2545
fax (252) 977-6031
ltguyette@aol.com

Clarence Haldy

Mr. Clarence R. Haldy
6104 Steedes Run Dr
Raleigh, NC 27616-5527

Nathan Gross

Mr Nathan B Gross
IBM Corp
4928 Morning Edge Dr
Raleigh, NC 27613
grossn@us.ibm.com

Donald Hadley

Mr. Donald F. Hadley III CFP CHF
FFG COMPANIES INC
President
1003 Dresser Ct
Raleigh, NC 27609
(800) 786-4332
fax (919) 878-7368
dhadley@ffgusa.com

Johnnie Hales

Mr. Johnnie D. Hales
ROYAL HOME FASHIONS INC
VP Adm & Controller
Post Office Box 930
Fay & Eastview Street
Durham, NC 27702-0930
(919) 683-8011
fax (919) 682-8456
jhales@crossill.com

North Carolina Triangle Area Chapter 406
Institute of Management Accountants

Marcia Grosse

Mrs. Marcia M. Grosse
PPD MEDICAL COMMUNICATIONS
528 Cayman Ave
Holly Springs, NC 27540
(919) 768-9438
fax (919) 765-8353
marcia.grosse@durham.ppd.com

Tracey Haeseker

Mrs. Tracey P. Haeseker CPA
GREGORY POOLE EQUIPMENT CO
301 Pasture Ln
Raleigh, NC 27614-9605
(919) 828-0641
haeseker@gregpoole.com

Kathleen Hall

Mrs. Kathleen Y. Hall CFM CMA
IBM CORP
4 Wakeman Hill Road
Sherman, CT 06784
(914) 766-4623
fax (914) 766-9474
kyhall@us.ibm.com

Christine Harbinson

Miss Christine M. Harbinson
CPA
6032 Bradford Ct
Dallas, NC 28034
(704) 834-2000
christineharbinson@yahoo.com

Ricky Hardy

Mr. Ricky N. Hardy CPA

Standard Commercial Tobacco Co I
Sr VP Finance
2201 Miller Road
Wilson, NC 27893-6860
(252) 237-1106
fax (252) 291-7660
rhardy@sccgroup.com

Rander Harris

Mr. Rander H. Harris CFM CMA

ConAgra Foods
8501 ONeal Rd
Raleigh, NC 27613-4210
randerhsr@yahoo.com

Wanda Hardin

Ms. Wanda B. Hardin
CBP RESOURCES INC
PO Box 26300
Greensboro, NC 27438
(336) 286-4073
fax (336) 286-4079
hardinw@leaders.ccl.org

Carl Harris

Mr. Carl D. Harris CMA CPA
QUALEX INC
4430 Sun Valley Dr
Durham, NC 27707-5689
(919) 484-3666
CarlHarris@nc.rr.com

Roger Hart

Mr. Roger L. Hart CMA
Organization for Tropical Studie
128 Gristmill Ln
Chapel Hill, NC 27514
(919) 684-8087
fax (919) 684-5661
Rogerlhart@aol.com

John Hardison

Mr. John C. Hardison III CMA
JAMES SPRUNT COMMUNITY COLL
221 Washington Cir
Wallace, NC 28466-1557
(910) 296-2432

Jennifer Harris

Ms. Jennifer S. Harris CMA CPA
NORTH CAROLINA ST UNIV
6221 Woodwork Trail
Raleigh, NC 27606
(919) 515-9230
fax (919) 254-3165
jennsh@prodigy.net

Telecia Hartsfield

Ms. Telecia L. Hartsfield
4557 D Hargrove Rd
Raleigh, NC 27604

Denise Hards

Ms. Denise D. Hards
517 Grist Valley Ln
Apex, NC 27539
dhardsnc@aol.com

Melissa Harris

Ms. Melissa A. Harris
3508 Neptune Dr
Raleigh, NC 27604
mmharris2@unity.ncsu.edu

Ian Hayden

Mr. Ian B. Hayden
QUINTILES TRANSNATIONAL
106 Sequoia Ct
Cary, NC 27513-4754
(919) 998-2546
fax (919) 998-7402
ian.hayden@quintiles.com

North Carolina Triangle Area Chapter 406
Institute of Management Accountants

James Hayne

Mr. James H. Hayne CMA CPA
LUNSFORD & STRICKLAND PA
1038 Kingsway Dr
Apex, NC 27502-8945
(919) 783-7073
fax (919) 467-7929
jimh@lscpas.com

D Henry

Mr. D M. Henry CMA
121 Meadows Cir
Knightdale, NC 27545-9301
919-217-9308
darbonnebayou@nc.rr.com

Jennifer Hicks

Mrs. Jennifer L. Hicks
603 Battery Walk Ln
Cary, NC 27519

Lann Hegler

Mrs. Lann S. Hegler
7302 Kemp Rd
Raleigh, NC 27613-8111
(919) 486-8963
lannsell@us.ibm.com

Nancy Henry-Serra

Ms. Nancy L. Henry-Serra CMA
IBM CORP
12333 Wharton's Way
Raleigh, NC 27613
(919) 543-8158
nlserra@aol.com

Peggy Higgins

Ms. Peggy B. Higgins
901 Lakeside Drive
Garner, NC 27529-4248

Mark Hemric

Mr. Mark C. Hemric CMA
Duke University Health System
113 Castlefern Dr
Cary, NC 27513-5157
(919) 416-5356
fax (919) 416-4748
mark.hemric@duke.edu

George Hermane

Mr. George G. Hermane
Pergo Inc
3128 Highwoods Blvd Ste 100
Raleigh, NC 27604
(919) 773-5129
fax (919) 773-6003
george.hermane@pergo.com

Sonia Hines

Mrs. Sonia R. Hines
IBM CORP
172 Susan Dr
Garner, NC 27529-9211
(919) 486-8849
fax (919) 486-8449
shines@us.ibm.com

Amy Hendricks

Ms. Amy R. Hendricks
NC STATE UNIV
145 Hunt Club Ln
Raleigh, NC 27606
ahendricks@nc.rr.com

Carl Hicks

Mr. Carl E. Hicks
Beacon Digital Services LLC
President & CFO
PO Box 598
Clemmons, NC 27012
(336) 926-0645
fax (336) 778-2711
chicks@b-d-services.com

Becky Hirte

Ms. Becky M. Hirte CIA CPA
Progress Energy Services Co LLC
4608 Theys Rd
Raleigh, NC 27606-9677
(919) 546-4503

Lisa Hodge

Ms. Lisa J. Hodge CMA CPA
NORTEL NETWORKS INC
8605 Zinfandel Place
Raleigh, NC 27615-2744
(919) 992-7442
fax (919) 997-0003
lisahodg@nortelnetworks.com

M James Hollis

Mr. M James Hollis
6104 Godfrey Drive
Raleigh, NC 27612-6715

Phillip Horton

Mr. Phillip W. Horton
FIRST CITIZENS
115 Minden Ln
Raleigh, NC 27607-4992
(919) 463-5975
fax (919) 460-5354
Phillip.horton@firstcitizens.com

North Carolina Triangle Area Chapter 406
Institute of Management Accountants

Mark Hoffman

Mr. Mark M. Hoffman CMA CPA
UNC HEALTHCARE
105 Flora Springs Dr
Cary, NC 27519
(919) 966-5153
mhoffman@unch.unc.edu

Diane Holt

Ms. Diane K. Holt CPA
SAS INST INC
204 Steep Bank Drive
Cary, NC 27511
(919) 531-3533
dholt@nc.rr.com

Curtis Horvat

Mr. Curtis Horvat
CUMMINS ATLANTIC INC
105 Musgrove Cir
Cary, NC 27511
(252) 237-9111
chorvat@nc.rr.com

Trudy Holder

Ms. Trudy H. Holder
CPA
RESEARCH & EVALUATION ASSOC
1356 Holeman Ashley Rd
Timberlake, NC 27583-8991
(919) 493-1661x
trudyhold@aol.com

B Hooks

Mr. B Hooks
8701 X-Way Road
Gibson, NC 28343

Bradford Houck

Mr. Bradford L. Houck CFM CMA
IBM CORP
5500 Pine Leaf Ct
Raleigh, NC 27606-9598
(919) 486-8646
bhouck@us.ibm.com

R Wayne Holliday

Mr R Wayne Holliday
NC DOC INTERNAL AUDIT
Audit Mgr
2321 Crabtree Boulevard
4209 MSC
Raleigh, NC 27699-4209
(919) 733-9324
hrw08@doc.state.nc.us

Rebecca Hoover

Mrs. Rebecca G. Hoover CPA
HOOVER & HOOVER CPAS
Owner
PO Box 4604
Cary, NC 27519-4604
(919) 859-3343
fax (919) 859-3342
rebecca@hoovercpa.com

Grace Hoyt

Ms. Grace T. Hoyt CMA
1365 Valley Green Road
Etters, PA 17319
gracehoyt@hotmail.com

Elizabeth Hudgins

Miss. Elizabeth H. Hudgins
PO Box 37274
Raleigh, NC 27627
ehhudgins@unity.ncsu.edu

Tera Jackson

Ms. Tera L Jackson CPA
IBM
606 Woods Mill Cir
Wake Forest, NC 27587
(919) 486-8759
fax (919) 486-8944
olsonte@us.ibm.com

Mark Jaeger

Mr. Mark W. Jaeger
Mallinckrodt Inc
12317 Timbercroft Dr
Raleigh, NC 27613-7852
(919) 878-2815
fax (919) 878-4782
mwjaege@mkg.com

Beverly Hudler Beverly

Miss. Beverly L. Hudler Beverly
5126 Berry Rose Way
Cary, NC 27511-9267
blhudler@unity.ncsu.edu

Timothy Jackson

Mr. Timothy W. Jackson CMA CPA
VECTOR TOBACCO USA LTD
Senior V. P. - Operations & COO
250 Crown Blvd
Timberlake, NC 27583
(336) 598-7301
fax (336) 598-7402
tjackson@vectob.com

Joanna Jarocki

Ms. Joanna Jarocki
10626 Peppermill Dr
Raleigh, NC 27614
joasia23@yahoo.com

North Carolina Triangle Area Chapter 406
Institute of Management Accountants

Stephanie Humphrey

Mrs. Stephanie M. Humphrey
IBM CORP
206 Chapel Valley Ln
Apex, NC 27502-4673
(919) 486-8710
shumphry@us.ibm.com

Eric Jacobsson

Mr. Eric R. Jacobsson
12200 205 Oakwood View Dr
Raleigh, NC 27614
ericjacobsson@yahoo.com

Virginia Jenkins

Mrs. Virginia W. Jenkins
200 W Hill Dr
Cary, NC 27519
gmj@nc.rr.com

Donald Hutchinson

Mr. Donald J. Hutchinson
300 Riggsbee Farm Dr
Cary, NC 27519
dhutch3060@aol.com

Arthur Jaeger

Mr. Arthur G. Jaeger
1321 Wagram Ct
Raleigh, NC 27615
artjaeger@aol.com

Li Jiang

Ms. Li Jiang CFM CMA
IBM
108 Beaver Glen Court
Morrisville, NC 27560-7564
(919) 517-0716
lijiang@us.ibm.com

Elizabeth John

Mrs. Elizabeth John CFM CMA
311 Goose Creek Road
New Bern, NC 28562
shebaelizabeth@iwon.com

Nancy Johnson

Mrs. Nancy H. Johnson
5301 Amsterdam Pl
Raleigh, NC 27606
njohn1967m@yahoo.com

Kenneth Jones

Mr. Kenneth F. Jones CMA
KERR DRUG INC
3128 Gross Ave
Wake Forest, NC 27587-6488
(919) 544-3896
fax (919) 544-3796
ken@deltacomm.com

Christopher Johnson

Mr. Christopher V. Johnson CMA
PERGO INC
7812 Tylerton Dr
Raleigh, NC 27613-1553
(919) 773-5189
chris.johnson@pergo.com

Tonnette Johnson

Mrs. Tonnette R. Johnson
IBM
815 Pebblestone Dr
Durham, NC 27703
(919) 486-8734
fax (919) 486-8940
toniraeny@yahoo.com

Sophie Jones

Mrs. Sophie G. Jones
General Parts, Inc
4020 Stemmons Ct
Raleigh, NC 27613
(919) 573-3031
fax (919) 573-3552
soophie.jones@gpi.com

Gary Johnson

Mr. Gary L. Johnson CPA
BB & T INSURANCE SERVICE
108 Whispering Pines Ct
Cary, NC 27511-4059
(919) 716-9941
fax (919) 716-9812

Hood Johnston,

Mr. Hood C. Johnston, CMA CPA
LEWIS DANZIG & COMPANY
58 James Road
Lewisburg, PA 17837-8848
(570) 742-2613
fax (570) 742-3956
hoodj@sunlink.net

Gary Jordan

Mr. Gary B. Jordan CMA CPA
BEA SYSTEMS
6708 Bentwinds Ln
Fuquay Varina, NC 27526-7572
(919) 349-6295
fax (908) 580-3080
garyjordan-cpa@nc.rr.com

North Carolina Triangle Area Chapter 406
Institute of Management Accountants

Karen Johnson

Mrs. Karen H. Johnson
UNITIVE INC
Cost Accounting Manager
4512 S Miami Blvd Ste 120
Research Triangle Pa, NC 27709
(919) 941-0606
fax (919) 941-5097
kjohnson@unitive.com

Bobby Jones

Mr. Bobby J. Jones CMA CPA
CAROLINA QUALITY INC
PO Box 2330
Henderson, NC 27536-2330
(252) 492-2763
fax (252) 492-9586
jjones@carolinaqualityinc.com

Joseph Jordan

Mr. Joseph T. Jordan Jr CPA
PRACTICE MANAGEMENT
SERVICES
1904 Sturbridge Court
Raleigh, NC 27612-4929
(919) 384-0500

Kris Kaffenbarger

Mr. Kris A. Kaffenbarger CMA CPA
HARDEES FOOD SYSTEMS
505 N 7th St 2000
Saint Louis, MO 63101
(614) 764-8443
fax (614) 764-6894
Kris_Kaffenbarger@wendys.com

Matthew Karash

Mr. Matthew M. Karash CMA
204 Martins Point Pl
Apex, NC 27502-5858

Ralph Kern

Mr. Ralph E. Kern
137 Shirley Drive
Cary, NC 27511-3854

Penny Kaffenberger

Ms. Penny J. Kaffenberger
BLUE CROSS BLUE SHIELD NC
CO
Financial Mgr Workplace Resourc
5901 Chapel Hill Blvd
Durham, NC 27707
(919) 765-3721
pjkaff143@triad.rr.com

Deborah Ann Kassirer

Mrs. Deborah Ann Kassirer
102 Briarcreek Ct

Cary, NC 27513
kassirer1@yahoo.com

Stephen Kerr

Mr. Stephen W. Kerr CPA
BRANCH BANKING & TRUST

4025 Wendy Ln
Zebulon, NC 27597-7631
(919) 246-2160
kerr@mercury.hendrix.edu

Stuart Kaleel

Mr. Stuart S. Kaleel CMA
HARDEE'S FOOD SYSTEMS INC
1117 Westrun Dr
Ballwin, MO 63021-6145
(252) 450-8839
skaleel@ckr.com

Joan Kelly

Mrs. Joan E. Kelly CMA
1133 Redford Drive
Raleigh, NC 27603-4755

Nikhil Khandelwal

Mr. Nikhil Khandelwal
Western Carolina Univ
PO Box 1486
Cullowhee, NC 28723
nikhilkhandelwal@hotmail.com

Robert Kantzes

Mr. Robert C. Kantzes CMA
IBM CORP
4421 Bracada Dr
Durham, NC 27705-1607
(919) 486-2957

Philip Keren

Mr. Philip D. Keren CMA
BRIDGEPOINT
102 Hardaway Ct
Cary, NC 27513-5623
(919) 468-3436
fax (919) 468-3522
pkeren@nc.rr.com

Jennette King

Mrs. Jennette J. King CPA
NORTEL NETWORKS
310 Marsh Ave
Raleigh, NC 27606-1343
(919) 992-8868

North Carolina Triangle Area Chapter 406
Institute of Management Accountants

Jerry King

Mr. Jerry T. King
D R ALLEN & SON INC
Vice President
Drawer 1867
Fayetteville, NC 28302-1867
pjktk@email.msn.com

Andrew Kleitsch

Mr. Andrew W. Kleitsch II CMA CPA
EXPLORIS
2608 Hiking Trail
Raleigh, NC 27615-3913
(919) 857-1013
fax (919) 597-3817

David Kuriger

Mr. David E. Kuriger II
ABB Inc.
Vice President
1021 Main Campus Dr.
Raleigh, NC 27613
(919) 807-5036
fax (860) 298-3631
david.e.kuriger@us.abb.com

Jimmie King

Mr. Jimmie R. King Jr
CPA
NACCO
1110 Margaret Dr
Tarboro, NC 27886-4128
(252) 931-5625

Thomas Koehler

Mr. Thomas K. Koehler
INTERPANE GLASS CO
205 Sycamore St
Clinton, NC 28328
fax (910) 596-2413
tkkohler@aol.com

Andrea LaBarbera

Mrs. Andrea L. LaBarbera CIA
Abbott Laboratories
700 Mayfair Dr
Rocky Mount, NC 27803
andrea.labarbera@hospira.com

Rudolph King

Mr. Rudolph L. King CMA
MJ SOFFE CO.
Director of Cost Accounting
One Soffe Drive
Fayetteville, NC 28312-5262
(910) 483-2500
rking@mjsoffe.com

Juliana Koffa

Ms. Juliana S. Koffa CFM CMA
IBM
1221 Fairview Club Dr
Wake Forest, NC 27587
(919) 254-7341
fax (919) 562-1689
Koffa@us.ibm.com

James Langfahl

Mr. James C. Langfahl CPA
NORTH CAROLINA STATE UNIV
14625 Bridletrace Ln
Pineville, NC 28134

Christopher Kitzer

Mr. Christopher J. Kitzer CFM CMA
Fuqua School of Business
2417 Northplace Way
Smyrna, GA 30080
ckitzer@hotmail.com

David Kraus

Mr. David J. Kraus
Practical Business Solutions LLC
3916 Sturbridge Dr
Durham, NC 27713-8054
(919) 401-6616
djkraus@pbs-llc.net

Lawrence Lanset

Mr. Lawrence S. Lanset
405 Smith Level Rd #119
Chapel Hill, NC 27516-8356

Jeffery Larotonda

Mr. Jeffery J. Larotonda
1555 New Garden Rd Apt 2C
Greensboro, NC 27410
(336) 931-4194

Louis Leigh

Dr. Louis S. Leigh Jr.
EBC ATOM INC
Executive Director
652 Raleigh Rd
Rocky Mount, NC 27804
(252) 212-5480
fax (252) 446-3116
lleigh@prodigy.net

John Leskovec

Mr. John F. Leskovec III
609 Autumn Gate Dr
Cary, NC 27511
leskovec@earthlink.net

North Carolina Triangle Area Chapter 406
Institute of Management Accountants

Synethia Layne

Ms. Synethia D. Layne CPA
PERGO INC
4704 E Blue Bird Ct
Raleigh, NC 27606
(919) 773-5818
fax (919) 773-6003
lay658@aol.com

Lonnie Lempert

Mr. Lonnie D. Lempert
Alfred Williams & Company
8704 Old Tom Way
Raleigh, NC 27613-5408
(919) 954-0770
lonnie@nc.rr.com

Byron Leu

Mr. Byron R. Leu
REVLON CONS PROD CORP
2019 Pratt Cir
Franklinton, NC 27525-9772
(919) 603-2696
fax (919) 603-2048

Lisa Lazar

Ms. Lisa A. Lazar
UNICON CONCRETE LLC
270 Beechtree Dr
Cary, NC 27513-2457
lisa-pisa-poo@mindspring.com

Mary Lenard

Ms. Mary J. Lenard CMA
UNC GREENSBORO
3049 Imperial Oaks Dr
Raleigh, NC 27614
(336) 256-0122
mjlenard@uncg.edu

R.Scott Levy

Mr. R.Scott Levy CIA
IBM INTERNAL AUDIT
556 Pantela Dr
Richmond, VA 23235
slevy@us.ibm.com

Lena Lee

Ms. Lena K. Lee
1331 Audubon Parc Dr
Cary, NC 27511

Natthew Leonard

Mr. Natthew B. Leonard
2030 Bimini Ct
Raleigh, NC 27603
mbleonar@unity.ncsu.edu

William Lewis

Mr. William F. Lewis Jr
101 Indigo Drive
Cary, NC 27513-3319

Karen Lightfoot

Ms. Karen D. Lightfoot CPA
CPA
KDL, INC.
1 Avenue De Villaine
8 Palais Du Soleil
Beausoleil France 06, France
(919) 787-2662
fax 919-787-1923
klightfoot@monaco.edu

Robert Lockhart

Mr. Robert B. Lockhart

Sony Ericsson Mobile Communicari
7001 Development Dr
Research Triangle Pa, NC 27709
(919) 472-1640
lockrb@hotmail.com

Rodney Lundgren

Mr. Rodney W. Lundgren CMA

709 Knightsborough Way
Apex, NC 27502-4553
lundconsul@aol.com

Yi-Kung Lin

Ms. Yi-Kung L. Lin CMA CPA
IBM CORP
1120 Four Wheel Dr
Wake Forest, NC 27587-8689
(919) 301-5475
fax (919) 301-5636
changlin@mindspring.com

Kenneth Long

Mr. Kenneth W. Long CFM CMA
EMBREX INC
307 Mill Creek Dr
Fuquay-Varina, NC 27526
(919) 314-2523
klong@embrex.com

Kevin Lyon

Mr. Kevin L. Lyon
NORTEL NETWORKS
204 Melksham Rd
Wake Forest, NC 27587-5197
(919) 992-7763
fax (919) 905-9308
klyon@nortelnetworks.com

John Litsas

Mr. John N. Litsas CMA CPA
NORTEL NETWORKS
1000 Ravenscar Dr
Raleigh, NC 27615-4733

Ronald Lowell

Mr. Ronald J. Lowell
SOLECTRON GLOBAL SERVICES
Sr Financial Analyst
1000 Innovation Avenue
Morrissville, NC 27560
(919) 604-3575
ronlowell@solectron.com

William MacKrell

Mr. William J. MacKrell CPA
3 Home Croft Ct
Durham, NC 27703-9123

North Carolina Triangle Area Chapter 406
Institute of Management Accountants

John Locicero

Mr. John P. Locicero
UNITED STATES POSTAL SERVICE
7308 Valley Lake Dr
Raleigh, NC 27612-6934

Rodney Lubke

Mr. Rodney Q. Lubke CMA
KENNAMETAL INC
11233 N Radner Way
Raleigh, NC 27613-5531

Susan MacPhail

Ms. Susan H. MacPhail CMA
NORTEL NETWORKS
4812 Montvale Dr
Durham, NC 27705-4929
(919) 997-4002
macphail@nortelnetworks.com

Lisa Madison

Miss Lisa L. Madison CFM CMA CPA
GLOBAL INT'L /BRITT WORLDWIDE
CFO
3167 Tucker St Ext
Burlington, NC 27215-8906
fax (242) 363-5302

Michael Mankowski

Mr. Michael A. Mankowski CFM CMA
IBM
100 E Hartsdale Ave
Apt 5DE
Hartsdale, NY 10530
(919) 766-1423
mikemank@hotmail.com

John Marsh

Mr. John C. Marsh
PO Box 2001
Southern Pines, NC 28388-2001

Patrick Maginnis

Mr. Patrick L. Maginnis
GOLFNET INC
163 Bellhaven Dr
Carthage, NC 28327-9598
(910) 215-8800
fax (910) 215-9869
pmaginnis@golfnet.com

Robert Markham

Mr. Robert W. Markham
MARKHAM & CO LLC
312 Wolfbridge Rd
Holly Springs, NC 27540-8972

Charles Marshall

Mr. Charles W. Marshall
TIPPER TIE
Assistant Controller
PO Box 866
2000 Lufkin Rd
Apex, NC 27615
(919) 362-8811
fax (919) 362-4839
wmarshall@tippertie.com

David Maness

Mr. David J. Maness CMA CPA
5408 Leopards Bane Ct
Holly Springs, NC 27540-9378
david.maness@manesspllc.com

Martin Marks

Mr. Martin R. Marks CMA
306 Berryhill Dr
Carrboro, NC 27510
mart428@bellsouth.net

Joseph Matamoros

Mr. Joseph P. Matamoros
737 W Hargett Unit 104
Raleigh, NC 27603
jmatamoros_01@yahoo.com

Patrick Manhard

Mr. Patrick M. Manhard CFM CMA
CAMPBELL ALLIANCE GROUP INC
Vice President - Finance
8540 Colonnade Center Dr Ste 401
Raleigh, NC 27615
919-844-7100
fax 919-844-7560
pmanhard@campbellalliance.com

Paul Markson

Mr. Paul A. Markson
Sony Ericsson Mobile Comm Inc
Controller
7001 Development Dr
PO Box 13969
Research Triangle Pa, NC 27519
(919) 472-7375
fax (919) 472-7451
paul.markson@sonyericsson.com

Jason Matthews

Mr Jason W Matthews
213 Gettysburg Dr
Cary, NC 27513
jmatthews@oculan.com

North Carolina Triangle Area Chapter 406
Institute of Management Accountants

John Mays

Mr. John R. Mays CMA CPA
AMERICAN FIBERS AND YARNS CO
PO Box 16309
Chapel Hill, NC 27514
919-969-4232
jmays@afyarns.com

John McClenney

Mr. John J. McClenney CPA
Nacco Materials
Manager Americas Fin Analysis
1400 Sullivan Dr
Greenville, NC 27834-2011
(252) 931-5177
aajmccle@nmhg.com

Connie McGuinness

Ms. Connie L. McGuinness
Global Knowledge
5005 Sunset Walk Ln
Holly Spgs, NC 27540-7823
(910) 774-6700
fax (919) 774-9651
mcguinn@telamon.org

David McAnally

Mr. David McAnally
Kerr Drug Inc
987 Kintail Ct
Wake Forest, NC 27587
(919) 544-3896
fax (919) 544-3796
bedfordboy@aol.com

Thomas McEvoy

Mr. Thomas J. McEvoy CMA
44 Mukurta St
Chapel Hill
Queensland 4069, Australia

Charles McKee

Mr. Charles E. McKee CFM CMA
PO Box 195697
Winter Springs, FL 32719-5697
(407) 448-5107
chuck_mckee_3@yahoo.com

Lori McClain

Ms. Lori L. McClain CMA
RAYCHEM
404 Brook Creek Dr
Apex, NC 27502-6124
(919) 557-8439

Robert McGee

Mr. Robert D. McGee
923 Pamlico Dr
Cary, NC 27511-3764

Christopher McKittrick

Mr. Christopher T. McKittrick CPA
10307 Rocky Ford Ct
Raleigh, NC 27614
ctm1999@hotmail.com

Judith McClaskey

Mrs. Judith M. McClaskey CPA
PLAZA ASSOCIATES INC
318 Sw Maynard Rd
Cary, NC 27511-4406
(919) 781-8870

Shawn McGinty

Mr. Shawn McGinty
OPTICARE HEALTH SYS INC
111 Milley Brook CT
Cary, NC 27519
(252) 451-2134
fax (252) 451-2175
smcginty@nr.rr.com

Lelia McLamb

Mrs. Lelia C. McLamb
CP&L CO
238 Fox Walk Path
Garner, NC 27529-8277
(919) 546-7451
fax (919) 779-6781
cathy.mclamb@pgnmail.com

Adele McLean

Ms. Adele M. McLean CMA CPA
SEAGATE TECHNOLOGY
1872 Huxley Ct
San Jose, CA 95125
(831) 439-5708
tarheeladele@yahoo.com

Julie Meister

Ms. Julie H. Meister
VECTOR TOBACCO INC
10414 Shadowlawn Drive
Raleigh, NC 27614
heather_meister@unc.edu

Steven Michalak

Mr. Steven R. Michalak CMA
TRIANGLE COMMUNITY
FOUNDATION
Finance Director
PO Box 12834
RTP, NC 27709-2834
(919) 474-8370
fax (919) 941-9208
steve@trianglecf.org

North Carolina Triangle Area Chapter 406
Institute of Management Accountants

Kelly McMillen

Ms. Kelly L. McMillen
CLOSURE MEDICAL CORP
Jr. Accountant
5250 Greens Dairy Rd
Raleigh, NC 27616-4612
(919) 877-2154
fax (919) 790-1041
kcmcmillen@closuremed.com

Barbara A Mendler

Mrs. Barbara A Mendler CFM CMA
HBR Ltd
103 Tolliver Ct
Cary, NC 27511
(361) 332-9980
fax (361) 332-9981
bmendler@hbrlaw.net

J Dwight Miller

Mr. J Dwight Miller CPA
PUBLIC WORKS COMMISSION
CFO
9550 Old Wilmington Rd
Fayetteville, NC 28301
(910) 223-4005
fax (910) 829-0207
dwight.miller@faypwc.com

Stephen McNally

Mr. Stephen M. McNally
480 W Hills Dr
Henderson, NC 27537
smcnally@gloryroad.net

Patricia Messere

Ms. Patricia Y. Messere
106 Sylvan Grove Dr
Cary, NC 27511-9621

Jeff Miller

Mr. Jeff A. Miller
344 N 68th St
Wauwatosa, WI 53213
ja2miller@hotmail.com

Michael Meade

Mr. Michael J. Meade CMA
COOPER HAND TOOLS DIVISION
INC
104 Walcott Way
Morrisville, NC 27560-8335
919-783-2032
fax 919-783-2007
michael.meade@coopertools.com

Mirit Michaels

Ms. Mirit Michaels CFM CMA CPA
4724 Delta Vision Ct

Raleigh, NC 27612-7088
MMichaels2.MBA99@alumni.st
ern.nyu.edu

Lowell Miller

Mr. Lowell E. Miller CPA FLM
LOWELL MILLER ACCOUNTANT

President
PO Box 12951
Raleigh, NC 27605-2951
(919) 831-0100
fax (919) 833-9576
nclhga@earthlink.net

Eric Moinet

Mr. Eric E. Moinet
STRATEGIC TECHNOLOGIES INC
INDUSTRIES
4123 Cashew Dr
Raleigh, NC 27616-9586
(919) 379-8445
fax (919) 379-8100
moinet@msn.com

Michael Moore

Mr. Michael A. Moore
Controller

105 Kettering Ln
Cary, NC 27511-6630
moorecpapa@mindspring.com

Linda Morris

Ms. Linda H. Morris CMA
DELTA CONSOLIDATED

118 Trimble Ave
Cary, NC 27511-6208
(919) 838-2719
linda.morris@dcinds.com

Cathy Montgomery

Miss. Cathy I. Montgomery
QUALEX
5307 Cog Hill Ct
Raleigh, NC 27604-5895
(919) 382-6467
catmontgomery@mindspring.com

Powell Moore

Mr. Powell Moore III CMA
SPRINT MID-ATLANTIC TELECOM
14111 Capital Blvd
Wake Forest, NC 27587-7055
(919) 554-7726

David Moses

Mr. David M. Moses
2305 Declaration Dr
Raleigh, NC 27615
iceman2406@aol.com

North Carolina Triangle Area Chapter 406
Institute of Management Accountants

Danielle Moody

Mrs. Danielle Moody
Caterpillar Inc.
1500 Clover Ridge Ct
Raleigh, NC 27610-6286
taylodl3@hotmail.com

Roger Moore

Mr. Roger A. Moore
Magneti Marelli Powertrain USA I
VP Finance
2101 Nash Street
Sanford, NC 27330-6338
(919) 776-4111
fax (919) 775-6332
roger.moore@marelliusa.com

Mark Motamen

Mr. Mark A. Motamen CFM CMA
IBM CORP
5201 Cedarwood Drive
Raleigh, NC 27609-4616
(919) 486-8865
fax (919) 486-8940
mmotamen@mindspring.com

Patricia Moody

Miss. Patricia L. Moody
925 Bromley Way
Raleigh, NC 27615-1499
pmoody@mcnc.org

Kathryn Morris

Ms. Kathryn H. Morris CMA CPA
PLIANT SYSTEMS INC
304 Carol St
Carrboro, NC 27510-1106

Jennifer Moulton

Mrs. Jennifer A. Moulton
THERAPYEDGE INC
110 Cove Creek Dr
Cary, NC 27519-6101
(919) 313-2678

Steven Mull

Mr. Steven R. Mull
FONVILLE MORISEY REALTY INC
VP Operations & Planning
1000 St Albans Dr #400
Raleigh, NC 27609-7348
(919) 781-7809
fax (919) 785-4401
smull@fmrealty.com

Jennifer Murphy

Mrs. Jennifer A. Murphy CMA
Armstrong World Industries
424 Wetherburn Dr
Lancaster, PA 17601
(717) 396-4129
jennifermurphy816@hotmail.co
m

Alan Musso

Mr. Alan A. Musso CMA CPA
TARGACEPT INC
CFO
200 E First St Ste 300
Winston Salem, NC 27101-4165
(336) 480-2186
fax (336) 480-2107
alan.musso@targacept.com

Sean Mullane

Mr. Sean P. Mullane
510 Highgrove Dr
Chapel Hill, NC 27516
(919) 593-3352
sean@theplayergroup.com

Fred Murray

Mr. Fred A. Murray
ENSALES INC
356 Norwood Dr
Clayton, NC 27520
(910) 594-1539
fax (910) 594-0197
FMurray@ensales.com

Carl Nanney

Mr. Carl F. Nanney
4612 Westminster Drive
Raleigh, NC 27604-5960
fax (919) 876-2608
cnahhey@compuserve.com

R Donavon Munford

Mr. R Donavon Munford Jr
SMITH ANDERSON LAW FIRM
Partner
PO Box 2611
Raleigh, NC 27602-2611
(919) 821-6689

Amanda Musgrove

Ms. Amanda D. Musgrove
2027 Chub Key Ln
Raleigh, NC 27603

Anand Natarajan

Mr. Anand Natarajan
e-Emphasys Technologies
1022 Grande Heights Dr
Cary, NC 27513
anatarajan@e-emphasys.com

North Carolina Triangle Area Chapter 406
Institute of Management Accountants

Chris Murphy

Mr. Chris T. Murphy CIA CMA
LoneSource, Inc.
12113-106 Oakbrook View Dr
Raleigh, NC 27614
tmurphy3919@yahoo.com

Gerald Musselwhite

Mr. Gerald C. Musselwhite Jr CMA
CONTAMINANT CONTROL INC
3404 Arboretum Pl
Fayetteville, NC 28303-4992
(910) 484-7000
fax (910) 484-4978
jmusselwhite@contaminantcontrol.com

James Neal

Mr. James E. Neal
NEAL BRADSHER & TAYLOR PA
Partner
3721 University Dr Ste D
Durham, NC 27707-6231

Ronna Nichamin

Ms. Ronna W. Nichamin
104 Oak Spring Court
Carrboro, NC 27510-2504

Ann Norstog

Ms. Ann M. Norstog
EMBEX INC
2401 Scouting Trail
Raleigh, NC 27615
(919) 941-5185
fax (919) 941-5186
anorstog@embrex.com

Daryl O'Cain

Mr. Daryl C. O'Cain CPA
Progress Energy
10616 Highstream Dr
Raleigh, NC 27614
(919) 546-6514
daryl.o'cain@pgnmail.com

Sydney Njai

Mr. Sydney B. Njai
HERALD SUN
Accountant
2828 Pickett Rd
Durham, NC 27705
(919) 419-6593
fax (919) 419-6888
snjai01@hotmail.com

Stuart Nottingham

Mr. Stuart C. Nottingham
MANAGEMENT APPLICATIONS INC
88 Lake Royale
Louisburg, NC 27549-9592
(919) 878-6553
fax (919) 878-7905
scnottin@earthlink.net

Barbara O'Donnell

Ms. Barbara O'Donnell
Expresit Convenience Stores LLC
VP of Finance
6330 Quadrangle Dr Ste 300
Chapel Hill, NC 27517
(919) 477-4200
barbarao@expresit.com

Susan Nonken

Mrs. Susan T. Nonken
1482 Big Leaf Loop
Apex, NC 27502-4147
fax (919) 367-0267
snonken@nc.rr.com

Karen Nunez

Ms. Karen R. Nunez
North Carolina State University
Asst Professor
Campus Box 8113
Nelson Hall 3170
Raleigh, NC 27695-8113
919-513-0526
fax 919-515-4446
karen_nunez@ncsu.edu

Thomas O'Larnic

Mr. Thomas J. O'Larnic CFM CMA
7504 Topsy Sq
Wake Forest, NC 27587-5422
tolarnic@earthlink.net

Shelly Norris

Ms. Shelly A. Norris CMA CPA
PROGRESS ENERGY
4870 NC Hwy 50 S
Benson, NC 27504-8637
(919) 546-3496
fax (919) 546-2941
shelly.norris@pgnmail.com

Tracey Nycek

Ms. Tracey A. Nycek
1413 Hatherleigh Ct
Raleigh, NC 27612-6941

Lenora Osborne

Ms. Lenora J. Osborne
KIDDE FIRE FIGHTING
80 Blairwood Drive
Fuquay-Varina, NC 27526
(919) 639-6151
fax (919) 639-6131
maddshopr@aol.com

North Carolina Triangle Area Chapter 406
Institute of Management Accountants

Jamal Osman

Mr. Jamal B. Osman Sr.
PO Box 217296
Charlotte, NC 28221-0296
jamal@theima.org

Robin Pasquarello

Mrs. Robin D. Pasquarello
North Carolina Dept of Commerce
115 Chimney Rise Dr
Cary, NC 27511-7214
(919) 715-5602
rpsquarello@ncommerce.com

Katie Pearce

Ms. Katie E. Pearce
NCSU
105 Angora Ct
Cary, NC 27513
akpsi_princess@hotmail.com

Mary Helen Page

Mrs. Mary Helen Page CMA CPA
GlaxoSmithKline
6749 Walnut Cove Dr
Raleigh, NC 27603-9112
(919) 483-2741
TwinMomofTwo@aol.com

Lorrie Pate

Ms. Lorrie P. Pate
102 Meeting Hall Dr
Morrisville, NC 27560
(919) 486-8848
lorrico@us.ibm.com

Harriet Pearson

Mrs. Harriet E. Pearson
11108 Coachman's Way
Raleigh, NC 27614-9541

William Palmer

Mr. William E. Palmer CMA
BLUE CROSS BLUE SHIELD OF NC
916 Macon Pl
Raleigh, NC 27609-6327
919-765-7439
Bill.Palmer@bcbsnc.com

Tracy Patty

Ms. Tracy T. Patty
NCSU BUDGET OFFICE
4005 Ridgebrook Bluffs Dr
Raleigh, NC 27603-8820
(919) 515-9229
fax (919) 515-3031
tracy_patty@ncsu.edu

Christine Perciaccante

Mrs. Christine Perciaccante
Progress Energy
1228 Briar Patch Ln
Raleigh, NC 27615
(919) 546-5125
christine.perciaccante@pgnmail.com

Richard Parrish

Mr. Richard W. Parrish
IBM CORP
3700 Foxstone Dr
Raleigh, NC 27603-5179
(919) 254-4264
hokie@us.ibm.com

Sharla Payton

Mrs. Sharla D. Payton
1036 Mailwood Dr
Knightdale, NC 27545
sdpayton@hotmail.com

Terry Peterman

Ms. Terry Peterman
625 Tom Wright Rd
Franklinton, NC 27525
tjp@novozymes.com

Chris Peters

Mr. Chris R. Peters CMA
BASSETT FURNITURE IND
4782 Chippenham Dr
Roanoke, VA 24018-3446
Chrisrp2@cs.com

Elizabeth Piacenza

Mrs. Elizabeth H. Piacenza
ERNST & YOUNG LLP
537 Pace Street
Raleigh, NC 27606
lpiacenza@dnagroup.com

Erica Pollock

Ms. Erica A. Pollock CMA
PRICEWATERHOUSECOOPERS
2225 Thornblade Dr
Raleigh, NC 27604
(919) 755-3000

Elizabeth Peterson

Ms. Elizabeth A. Peterson
102 Martins Point Pl
Cary, NC 27519
kamuris@aol.com

Jennifer Pittman

Miss Jennifer B. Pittman
3400 Melrose Ridge Ct Apt 326
Raleigh, NC 27603
jbpittm2@unity.ncsu.edu

Jamie Pope

Mr. Jamie Pope
509 Walking Stick Trail
Clinton, NC 28328-2253

North Carolina Triangle Area Chapter 406
Institute of Management Accountants

Dirk Phillips

Mr. Dirk L. Phillips
CPA
NOVOZYMES NORTH AMERICA INC
304 Martindale Dr
Raleigh, NC 27614
(919) 494-3238
fax (919) 494-3415
dph@novozymes.com

Tina Pittman

Mrs. Tina M. Pittman CPA
CARDINAL CLINIC LLC
4114 Argentine Cir
Fayetteville, NC 28306-3921
(910) 867-8889
fax (910) 223-0131
pittmantd@hotmail.com

David Poucher

Mr. David R. Poucher CIA CMA
SCIQUEST COM INC
11108 Woodmont Dr
Raleigh, NC 27613-6809
(919) 659-2100
fax (919) 659-2199
dpoucher@sciquest.com

Gerald Phillips

Mr. Gerald V. Phillips Jr
BILLINGS & GARRETT INC
PO Box 97964
Raleigh, NC 27624-7964
geraldvphillips@hotmail.com

Jason Podvin

Mr. Jason J. Podvin CMA CPA
EASTMAN CHEMICAL CO
427 Fishery Loop Rd
Erwin, TN 37650-8922
(423) 229-2647
fax (423) 224-7240
jjpodvin@eastman.com

Jerome Power

Mr. Jerome A. Power
233 Saddletree Rd
Oxford, NC 27565-3467

Jeffrey Pucher

Mr. Jeffrey S. Pucher
MJM Investigations, Inc
8428 Lunar Stone Pl
Raleigh, NC 27613
(919) 846-0997
fax (866) 225-5912
jpucher@nc.rr.com

Steve Rakes

Mr. Steve L. Rakes CPA
SOUTHEAST VENTURE PARTNERS
CFO
630 Davis Dr Ste 220
Morrisville, NC 27560
(919) 558-8324
fax (919) 558-2025
steve@seinteractive.com

Kirk Robertson

Mr. Kirk E. Robertson CMA
NATIONAL SPINNING
1106 Worthington Rd
Winterville, NC 28590-7837
(252) 975-7610
krobertson@natspin.com

Mary Quinn

Ms. Mary K. Quinn CMA CPA
JOYNER'S FUNERAL HOME
1704 Chamberlain Dr
Wilson, NC 27896-1560
(919) 823-4111
fax (919) 823-8723
quinnmk@aol.com

Daniel Reigada

Mr. Daniel Reigada
IBM
32-E Dansey Circle
Durham, NC 27713
(919) 486-8846
dreigada@us.ibm.com

Erik Rodriguez

Mr. Erik L. Rodriguez
ELI LILLY AND COMPANY
Department Head
20 TW Alexander Dr
Research Triangle Pa, NC 27709
(919) 314-4282
fax (919) 314-4344
elr@lilly.com

Angela Rackley

Ms. Angela K. Rackley
108 Milby Ct
Rocky Mount, NC 27804
(919) 327-3992
akrackle@unity.nsu.edu

Mark Rennhack

Mr. Mark E. Rennhack CFM CMA CPA
RENNHACK CONSULTING INC
123 Mel Oak Drive
Chapel Hill, NC 27516-9305
(919) 969-7825
fax (919) 882-9081
markr@rennhackconsulting.com

Vito Romano

Mr. Vito V. Romano CMA
IBM CORP
205 Riverwalk Circle
Cary, NC 27511-7249
vito@us.ibm.com

North Carolina Triangle Area Chapter 406
Institute of Management Accountants

Kimberly Ragan

Ms. Kimberly Y. Ragan CPA
REICHHOLD INC
812 Roanoke Dr
Cary, NC 27513-3912
(919) 558-2390
fax (919) 990-7704
kim.ragan@reichhold.com

Gavin Ridgway

Mr. Gavin T. Ridgway
2111 Rhine Rd
Hillsborough, NC 27278
gavinridgway@earthlink.net

Timothy Romocki

Mr. Timothy L. Romocki CMA
PO Box 971
2625 Brassfield Rd
Creedmoor, NC 27522-8704
(919) 807-2387
tim.romocki@treasurer.state.nc.us

David Roth

Mr. David M. Roth
SMT Resource Group LLC
Controller
2801 Superior Dr Ste 110
Wake Forest, NC 27587
919-488-8901
david.roth@smtresource.com

Joseph Safrit

Mr. Joseph G. Safrit CIA
POTASHCORP
Manager Accounting
PO Box 3320 Ste 400
1101 Skokie Blvd
Northbrook, IL 60062-4126
(847) 849-4451
fax (847) 849-4690
jgsafrit@potashcorp.com

Beth Sarko

Ms. Beth A. Sarko
KOSA
Financial Analyst
4051 Charlotte Park Dr
Charlotte, NC 28217
(704) 586-7443
pen741@hotmail.com

Robert Rowan

Mr. Robert J. Rowan CPA
SAS INST
INC
766 Crabtree Crossing Pkwy
Cary, NC 27513
919-531-5204
robert.rowan@sas.com

Rexson Sandy

Mr. Rexson S. Sandy
191 Dansey Rd

Greenville, NC 27834-4970
(252) 353-2402
fax (252) 353-2418
BATTOMA@AOL.COM

Russell Savre

Mr. Russell M. Savre CMA
AM PAPPAS AND ASSOCIATES

111 Legacy Lane
Durham, NC 27713-9019

Paul Sadler

Mr. Paul A. Sadler
IBM COMMUNICATIONS
PO Box 531
Morrisville, NC 27560
(919) 486-8817
fax (919) 486-8982
psadler@us.ibm.com

James Santaniello

Mr. James T. Santaniello CIA CMA
HIGHWOODS PROPERTIES INC
Manager Internal Audit
3100 Smoketree Ct #600
Raleigh, NC 27604-1050
(919) 875-6665
fax (919) 876-2448
jim.santaniello@highwoods.co

Tammie Sawaya

Mrs. Tammie L. Sawaya
RESEARCH TRIANGLE INST
2115 Baptist Rd
Durham, NC 27703
(919) 541-6324
tls@rti.org

William Saelinger

Mr. William J. Saelinger CMA
SEGRO COLONIAL ABRASIVES
8 Holbrook Ln
Paxton, MA 01612
(508) 795-5046
lgstreet@mindspring.com

Katherine Santos-Rezendes

Ms. Katherine A. Santos-Rezendes
RTI International
214 Torrey Pines Dr
Cary, NC 27513-3441
(919) 541-6162
fax 919-541-6288
rezendes@bellsouth.net

Kenneth Sawyer

Mr. Kenneth F. Sawyer CPA
3709 Nancy Ln
Raleigh, NC 27604
kenny_sawyer@ncsu.edu

North Carolina Triangle Area Chapter 406
Institute of Management Accountants

Roby Sawyers

Dr. Roby B. Sawyers CMA CPA
NORTH CAROLINA STATE UNIV
Associate Professor
Dept of Acct Campus Box 8113
Raleigh, NC 27695-8113
(919) 515-4443
fax (919) 545-4446
ROBY_SAWYERS@NCSU.EDU

David Schmid

Mr. David M. Schmid CMA
130 River Landing Dr
Unit 1205
Charleston, SC 29492
sdave@hotmail.com

Natalie Schneider

Ms. Natalie J. Schneider
DUKE UNIVERSITY MEDICAL
CENTER
4525 Moss Spring Dr
Durham, NC 27616
(919) 684-2639
fax (919) 681-8398
nantucketnc@hotmail.com

Darlene Schrufer

Mrs. Darlene L. Schrufer
1100 Terrace Ct
Raleigh, NC 27615-7637
darlenes@juno.com

Bern Shuey

Ms. Bern Shuey CMA CPA
MEREDITH COLL
4516 Laid Back Ln
Zebulon, NC 27597-7549
fax (919) 570-6592
bkshuey@aol.com

Maksym Shyshnyak

Mr. Maksym A. Shyshnyak
Pergo, Inc.
Financial Analyst
3128 Highwoods Blvd
Raleigh, NC 27604
919-773-5973
fax 919-773-6003
maxshish@hotmail.com

David Scobie

Mr. David E. Scobie CPA
WATTS & SCOBIE CPAS
Partner
5100 Oak Park Road
Raleigh, NC 27612-3027
(919) 787-1705

Elizabeth G Seay

Mrs. Elizabeth G Seay
IBM
144 Pebblestone Ct
Willow Spring, NC 27592
(919) 486-8838
seay@us.ibm.com

Richard Seekamp

Mr. Richard W. Seekamp CFM CMA
CAROLINA POWER & LIGHT CO INC
204 Copper Hill Dr
Raleigh, NC 27606-8416
(919) 546-4226
fax (919) 546-7826
skip.seekamp@cplc.com

Robert Sefton

Mr. Robert E. Sefton
MANAGEMENT SOLUTIONS
10305 Boxelder Dr
Raleigh, NC 27613
(919) 971-2824
resefton@aol.com

David Sink

Mr. David E. Sink
NC REINSURANCE FACILITY
Chief Accountant
5401 Six Forks Rd
Raleigh, NC 27609-4462
(919) 783-9790
fax (919) 783-9542
des@ncrb.org

Charles Siska

Mr. Charles W. Siska Jr
TOTAL BILLINGS INC
3818 Dickens Ave
Hope Mills, NC 28348
(910) 487-8755
fax (910) 487-4225
siskajr@aol.com

Maryam Shabon

Ms. Maryam M. Shabon CPA
PROGRESS ENERGY INC
212 Capistrane Dr
Cary, NC 27519
(919) 235-6019
fax (919) 235-6059
Maryam.shabon@pgnmail.com

Asit Sharma

Mr. Asit Sharma CMA
3001 Englefield Dr
Raleigh, NC 27615
(919) 872-1260
asharma@stancilcpa.com

Betty Shaw

Ms. Betty A. Shaw CPA
PO Box 1681
Cary, NC 27512
betty_em@Bellsouth.net

Bruce Shearin

Mr. Bruce B. Shearin
CERTAINTEED CORP
18316 SE 43rd Ln
Vancouver, WA 98683
(503) 243-5237
fax (503) 248-9271
bruce.b.shearin@saint-gobain.com

Charles Smith

Mr. Charles T. Smith Jr CPA
1 Garber Ct
Durham, NC 27705-1307

Christopher Smith

Mr. Christopher W. Smith
2 Colonial Way
Plainville, MA 02762
cwsmith@ncsu.edu

North Carolina Triangle Area Chapter 406
Institute of Management Accountants

Ralph Sigler

Mr. Ralph J. Sigler Jr CMA
SIGLER & ASSOCIATES
1397 Capital Blvd
Raleigh, NC 27603-1117
(910) 278-6472
ipolybag@ntwrks.com

Matthew Simmons

Mr. Matthew S. Simmons CMA CPA
BBNC
300 N Hawthorne Rd
Winston Salem, NC 27104
(336) 733-3412
fax (336) 733-3123
simmons@blueridgeonline.net

Michael Smith

Mr. Michael S. Smith CMA
NONE
1702 Patterson Grove Rd
Apex, NC 27502-9519
ncsmiths_98@yahoo.com

Nancy Smith

Ms. Nancy E. Smith
MCI
200 Danton Dr
Cary, NC 27511-9060
(919) 378-6509
fax (919) 378-6705
nsmith18@aol.com

Wanda Smith

Ms. Wanda A. Smith
SPRINT MID-ATLANTIC TELECOM
7612 Thompson Mill Rd
Wake Forest, NC 27587-9093
(919) 554-6861
fax (919) 554-6775

Mark Snedeker

Mr. Mark D. Snedeker CPA
BLUE CROSS BLUE SHIELD INC
INC
121 Student Pl
Durham, NC 27713-6067
(919) 765-2777
fax (919) 765-7107
msnedeker@mindspring.com

Rick Sisson

Mr. Rick C. Sisson
RESEARCH TRIANGLE INSTITUTE
1602 Springview Ln
Durham, NC 27705
(919) 541-7204
fax (919) 541-7469
rsisson@rti.org

Charles Skender

Mr. Charles J. Skender CFM CMA
UNC-CHAPEL HILL
Adjunct Professor
Kenan-Flagler Business School
Box 3490
Chapel Hill, NC 27599-0001
skenderc@bschool.unc.edu

James Spence

Mr. James K. Spence
HAND TOOLS
Manager
Lufkin Rd
PO Box 728
Apex, NC 27502-0728
(919) 387-2593

Steven Spencer

Mr. Steven E. Spencer
Po Box 4023
Cary, NC 27519-4023
sespilot@nc.rr.com

Kathleen Sprouse

Ms. Kathleen A. Sprouse
Precision Fabrics Group
1700 Sharpe Rd
Greensboro, NC 27406
336-510-8043
fax 336-510-8004
kathy.sprouse@precisionfabrics.com

Scott Stafford

Mr. Scott A. Stafford
Solectron USA Inc

204 Millicent Way
Morrisville, NC 27560
(919) 941-2134
scottskippy@hotmail.com

Garrett Smith

Mr. Garrett T. Smith
North Carolina State University
6308 Windy Ridge Ct
Raleigh, NC 27606
gtsmith2@unity.ncsu.edu

Lawrence Smith

Mr. Lawrence G. Smith
FRANCIS ASSOCIATES
INCORPORATE
President
Post Office Box 20312
Raleigh, NC 27619-0312
(919) 981-0773
fax (919) 981-0697

Clinton Stanley

Mr. Clinton W. Stanley
942 Apt 1 Athens Dr
Raleigh, NC 27606
stanleyclint@netscape.net

Rhonda Stanley

Mrs. Rhonda L. Stanley CPA
10712 Cheltenham Ct
Raleigh, NC 27614
(919) 913-1043
rstanley@pozen.com

Amy Staton

Ms. Amy G. Staton CMA CPA
CITY OF ROCKY MOUNT
224 Emerson Drive
Rocky Mount, NC 27803-2234
(252) 972-1217

Darrell Staton

Mr. Darrell K. Staton CPA
CASHWELL APPLIANCE PARTS

Corporate Controller
3485 Clinton Rd
PO Box 2549
Fayetteville, NC 28302-2549
(910) 323-1111
fax (910) 323-5067
darrell@cashwell-appl-parts.com

North Carolina Triangle Area Chapter 406
Institute of Management Accountants

Michael Stenbeck

Mr. Michael V. Stenbeck
UPS
Manager
1627 Navaho Dr
Raleigh, NC 27609-7532
fax (919) 790-3636

John Stevenson

Mr. John K. Stevenson
MITRETEK SYSTEMS
6208 Bramblewood Dr
Raleigh, NC 27612-2223
(919) 332-3411
fax (919) 870-6079
jstevenson7@nc.rr.com

Steven Stoddard

Mr. Steven Stoddard
SAS Institute
100 Barnes Spring Ct
Cary, NC 27519
(919) 531-4101
fax (919) 677-4444
steve.stoddard@sas.com

Alicia Stone

Ms. Alicia J. Stone
ROMEIO, WIGGINS & COMPANY, LLP

10975 Pendragon Pl
Raleigh, NC 27614
(919) 662-1532
fax (919) 662-1533
cannon77@mindspring.com

Raymond Szafranski

Mr. Raymond L. Szafranski Jr CMA
TERECK OFFICE SOLUTIONS INC
200 Homestead Dr
Cary, NC 27513-2904
(919) 484-9270
ray@tereckoffice.com

William Tate

Mr. William Tate
1804 Abby Knoll Dr
Apex, NC 27502-4392
(919) 733-3624
wtaate@hotmail.com

Jack Stone

Mr. Jack L. Stone Jr
DELOITTE & TOUCHE LLP
Auditor
150 Fayetteville St Mall
PO Box 2778
Raleigh, NC 27602-2778
(919) 546-8000

Maureen Strahl

Mrs. Maureen E. Strahl
Padia Consulting Inc
627 Olympic Trl
Garner, NC 27529
(919) 481-1777
fax (919) 460-8999
mstrahl@padiiconsulting.com

Lea Strickland

Ms. Lea A. Strickland CFM CMA
F.O.C.U.S. RESOURCES
104 Barcelona Ct
Cary, NC 27513-4201
(919) 210-7171
lea@focusresourcesinc.com

Richard Strickler

Mr. Richard E. Strickler
SEA SUPREME INC
101 Northway Ct
Raleigh, NC 27615-4917
(919) 846-9488
fax (919) 846-9509
ric@seasupreme.com

Jolie Taylor

Mrs. Jolie M. Taylor CMA CPA
112 Fieldbrook Ct
Cary, NC 27519
rjtaylor@mindspring.com

Donna Thedford

Mrs. Donna J. Thedford
ARMACELL LLC
610 Lemontree Lane
Hillsborough, NC 27278-8499
(919) 304-3846
fax (919) 304-4338
Donna.J.Thedford@armacell.com

Joe Styres

Mr. Joe D. Styres CFM CMA
SUN MICROSYSTEMS INC
102 Painted Turtle Ln
Chapel Hill, NC 27516
(919) 616-2229
castyres@aol.com

John Sullivan

Mr. John Sullivan
Univ of N Carolina
211 Purefoy Ln
Chapel Hill, NC 27514
john_sullivan@unc.edu

Cooper Swanson

Mr. Cooper L. Swanson
NCSU
10829 Connally Ln
Raleigh, NC 27614

James Sweet

Mr. James H. Sweet Jr
N CAROLINA STATE UNIV
415 Reginald Dr
Enfield, NC 27823-8065
(919) 515-2985
fax (919) 515-2130
james_sweet@ncsu.edu

Taylor Thorne

Mr. Taylor T. Thorne
118 Meadowbrook Drive
Chapel Hill, NC 27514-2745

Andrea Tiffany

Mrs. Andrea K. Tiffany
IBM
211 Coley Farm Rd
Fuquay Varina, NC 27526
(919) 486-8179
atiffan@us.ibm.com

North Carolina Triangle Area Chapter 406
Institute of Management Accountants

Cheryl Taylor

Mrs. Cheryl E. Taylor
IBM CORP
5815 Waterford Landing Ct
Raleigh, NC 27610-6324

John Thomas

Mr. John M. Thomas III
PROGRESS ENERGY, INC.
107 Perry Creek Dr
Chapel Hill, NC 27514-5215
(919) 546-2663
fax (919) 546-4719
johnm.thomas@pgnmail.com

Olga Tiselsky

Mrs. Olga Tiselsky CGA
Starpoint Global Services
2112 Frissell Ave
Apex, NC 27502
aiving@nc.rr.com

Jeffrey Taylor

Mr. Jeffrey G. Taylor
2801 Sandra Dr
Raleigh, NC 27607
jtpintail@yahoo.com

Kevin Thomas

Mr. Kevin J. Thomas
105 S WoodShed Ct
Cary, NC 27513
arcticaudio@hotmail.com

Lauren Toler

Miss Lauren A. Toler
7022 Mead Lane
Raleigh, NC 27613
laurentoler11@hotmail.com

Michael Torsiello

Mr. Michael Torsiello
CP BUCKNER STEEL ERECTION INC

PO Box 598
Graham, NC 27253
(336) 376-8888
fax (336) 376-8855
mikct@bucknersteel.com

Leo Turner

Mr. Leo R. Turner Jr CFM CMA
STEPHENSON MILLWORK CO., INC.
8001 Hawkshead Road
Wake Forest, NC 27587
(252)237-1141
fax (252)237-4377
lturnerjr@aol.com

Karl Vass

Mr. Karl D. Vass Jr CIA CMA CPA
4821 Sinclair Dr
Raleigh, NC 27616-5451
(919) 834-2893

William Traywick

Mr. William P. Traywick CMA
PROGRESS ENERGY
137 Private Drive #10463
Proctorville, OH 45669
(704-526-0745
fax 704-526-0703
bill.traywick@progressfuels.com

Floyd Twyman

Mr. Floyd Twyman
INTERPATH COMMUNICATIONS INC
9409 Poplar Creek Ct
Laytonsville, MD 20882
(919) 253-5566
fax (919) 253-5373
ftwyman@nc.rr.com

Charles Venable

Mr. Charles J. Venable CMA
12016 Pawleys Mill Cir
Raleigh, NC 27614
venable@rtpfcu.org

Philip Tribel

Mr. Philip L. Tribel CPA
ROSS INDUSTRIES INC
17322 North Cambridge Way
Jeffersonton, VA 22724-1708
(540) 439-6200
tribel1@msn.com

Robert Ullman

Mr. Robert E. Ullman
TELAMON CORP
3652 Kapalua Way
Raleigh, NC 27610-8246
(919) 851-7611

Samay Vithlani

Mr. Samay P. Vithlani
North Carolina State University
2433 Ridgemont Hill Rd
Cary, NC 27513
spvithla@ncsu.edu

James Truax

Mr. James S. Truax
3421 Wellington Ridge Loop
Cary, NC 27511

D Scott Umina

Mr. D Scott Umina CMA
*MIDWEST FACTORY WAREHOUSE
INC*
Corporate Controller
1054 Gateway Dr
Dayton, OH 45404
(937) 228-3211
fax (937) 228-0225

Ellen Vola

Ms. Ellen Vola
ACS INC
102 Shady Meadow Cr
Cary, NC 27513-9103
(919) 313-2082
evola@nc.rr.com

North Carolina Triangle Area Chapter 406
Institute of Management Accountants

sumina@sugar-creek.com

Tina Vorhees

Mrs. Tina J. Vorhees CMA
CMA
IBM CORP
5200 Deergrass Ct
Raleigh, NC 27613-6567
(919) 543-7389
fax (919) 848-9055

Marsha Vosler

Ms. Marsha Vosler
Siemens
105 Plumtree Way
Cary, NC 27511
(919) 325-7025
fax (919) 325-7069
marsha.vosler@siemens.com

Robert Wage

Mr. Robert C. Wage Jr
ATI INDUSTRIAL AUTOMATION
4505 Arden Forest Rd.
Holly Springs, NC 27540
(919) 772-0115
fax (919) 772-8259
rwage@ati-ia.com

Frank Walker

Mr. Frank S. Walker II

PROGRESS ENERGY
Sr. Business Analyst
410 S Wilmington St
PEB 19A3
Raleigh, NC 27601-1849
(919) 546-4563
fax (919) 546-7826
Frank.Walker@pgnmail.com

Karen Walker

Mrs. Karen F. Walker
D-SCAN INC
Corporate Controller
PO Box 1067
2195 Philpott Rd
South Boston, VA 24592-1067
(804) 575-0900
fax (804) 575-0946
walktruck@kerrlake.com

William Wall

Mr. William J. Wall
6004 Thrush Circle
Sanford, NC 27332-8862

Stephen Wallace

Mr. Stephen G. Wallace CFM

VISTA IT
3220 Clandon Pk Dr
Raleigh, NC 27613-8838
(703) 561-4000
fax (919) 783-4635
steve.wallace@vistait.com

Bonnie Walston

Mrs. Bonnie H. Walston CMA
TYCO HEALTHCARE
MALLINCKRODT
100 Wild Brook Court
Cary, NC 27518
(919) 878-2958
bonnie.walston@tycohealthcare.com

Gregory Walton

Mr. Gregory J. Walton
Baker Furniture Upholstery
706 Huffman Mill Rd Apt N9
Burlington, NC 27215-5136
336-431-9115 x.
gregwalton5@yahoo.com

North Carolina Triangle Area Chapter 406
Institute of Management Accountants

Patricia Wagner

Mrs. Patricia T. Wagner CPA
IBM
2400 Beechview Ct
Raleigh, NC 27615
(919) 486-8105
fax (919) 486-8944
pmallard@us.ibm.com

Keith Wallace

Mr. Keith T. Wallace CPA
MCGLADREY & PULLEN LLP
5409 Blue Sage Dr
Raleigh, NC 27606-9027
(919) 645-1566
fax (919) 781-9270
ktwalla@aol.com

Jeffrey Warner

Mr. Jeffrey R. Warner
Novozymes North America Inc.
9838 Sovereign Way
Wake Forest, NC 27587
(919) 494-3019
whamiam@mindspring.com

W Kenneth Wease

Mr. W Kenneth Wease CMA CPA
W Kenneth Wease CPA
CAROLINAS
205 Wood Hollow Drive
Cary, NC 27513-4955
(919) 460-3333
fax (919) 469-0003
kwease@mindspring.com

Steven Weitzman

Mr. Steven A. Weitzman
SIEMENS MEDICAL SYSTEMS INC

103 Crosswaite Way
Cary, NC 27511-9193

Fred West

Mr. Fred C. West
PROGRESS ENERGY

Manager
555 Brevard Rd
Asheville, NC 28806-2316
(919) 731-9400
fred.west@pgnmail.com

Diana Weaver

Mrs. Diana L. Weaver
114 Clay Brook Dr
Goldsboro, NC 27530-5521
(919) 934-0545
fax (919) 934-7146
dweaver@girsberger-usa.com

Todd Weldy

Mr. Todd C. Weldy
Sony Ericsson
Fin Analyst III
7001 Development Dr 4535
RTP, NC 27709
(919) 472-7055
tweldy@nc.rr.com

Stephen Westerfield

Mr. Stephen G. Westerfield
MTS SENSORS DIVISION
322 Glenolden Ct
Cary, NC 27513
(919) 677-2364
stephen.westerfield@mts.com

Deborah Webb

Mrs. Deborah R. Webb
CPA
4722 Yank Rd
Wilson, NC 27893-8527

Tom Welsh

Mr. Tom G. Welsh CMA

1210 Kintail Dr
Raleigh, NC 27613-8121
tomgwelsh@hotmail.com

Martha Wheeler

Miss. Martha A. Wheeler CMA

NC STATE UNIV
302 Glen Bonnie Ln
Cary, NC 27511-5462
ann_wheeler@ncsu.edu

Corey Weisner

Mr. Corey A. Weisner CMA
STIMSON LANE
5746 28th Ave NE
Seattle, WA 98105-5518
(425) 415-3256
beerman_68@hotmail.com

Lisa Wesley

Ms. Lisa L. Wesley
LIGGETT GROUP INC
111 Milky Way Drive
Apex, NC 27502-6539
(919) 304-7708
llwesley@liggettgroup.com

Joseph White

Mr. Joseph D. White III
4208 Whistler Ct
Raleigh, NC 27606
jdwhite4@unity.ncsu.edu

Sandra White

Sandra L. White CMA CPA
ELI Research Inc
6015 Karyn's Rd
Efland, NC 27243
(919) 314-2042
fax (919) 281-8983
sandiw@eliresearch.com

Anna Williams

Miss. Anna D. Williams
Delta Gamma
258 Scenic Dr NE
Concord, NC 28025
(704) 467-7357
annad_williams@yahoo.com

Lori Williams

Mrs. Lori T. Williams
SAS INSTITUTE
420 Acorn Falls Court
Holly Spring, NC 27540
(919) 474-2107
lori_williams@eisai.com

North Carolina Triangle Area Chapter 406
Institute of Management Accountants

Tammy White

Ms. Tammy L. White
102 Carpenter Town Lane
Cary, NC 27519
919-783-2025
tammy.white@coopertools.com

Elizabeth Williams

Miss. Elizabeth A. Williams
3025 Farrior Rd
Raleigh, NC 27607
eaw16@aol.com

Nicholas Williams

Mr. Nicholas L. Williams
REICHHOLD CHEMICALS INC
1016 Walkertown Dr
Raleigh, NC 27614-7776
(919) 990-7909
fax (919) 990-7749

J Dale Whitworth

Mr. J Dale Whitworth CPA
GOLDEN CORRAL CORP
10221 Bushveld Ln
Raleigh, NC 27613-6149

Kevin Williams

Mr. Kevin P. Williams CMA
IBM CORP
103 Kronos Ln
Cary, NC 27513-5340
(919) 543-2834

Paul Williams

Dr. Paul F. Williams
NORTH CAROLINA ST UNIV
Dept of Accounting
Box 8113
Raleigh, NC 27695-8113
(919) 515-4436
fax (919) 515-4446

Matthew Wilford

Mr. Matthew T. Wilford
LV BRANDS
10800 Wilmore Drive
Raleigh, NC 27614
919-990-3566
fax 919-990-3508
mwilford@lvbrands.com

Kristin Williams

Miss. Kristin J Williams CMA
CP&L
2112 Stanton Hall CT
Raleigh, NC 27614
(919) 546-6323
fax (919) 620-2556
kristin.justice@cplc.com

Denise Wilson

Ms. Denise S. Wilson
New South Lumber Co
Controller
408 Mt Hermon Rock Creek Roas
Graham, NC 27253
(336) 376-3130x
fax (336) 376-8403
denisew@newsouthcompanies.co

m

Jon Wilson

Mr. Jon S. Wilson CMA
BUSINESS TELECOM INC
3220 Falconhurst Dr
Wake Forest, NC 27587-4813
(919) 863-7166
sean.wilson@btitele.com

Gary Wolfe

Mr. Gary V. Wolfe CMA
PERFORMANCE TECHNOLOGIES INC
204 Danton Dr
Cary, NC 27511-9060
(919) 743-5059
fax (919) 743-5116
gary.wolfe@centerpiece.com

Yen-Chen Wu

Ms. Yen-Chen Wu
2416 Trailwood Hills Dr
Raleigh, NC 27603
ywu2@unity.ncsu.edu

Mark Wilson

Mr. Mark S. Wilson CMA
KIMLEY HORN & ASSOCIATES
Sr Vice President
PO Box 33068
Raleigh, NC 27636-3068
(919) 677-2010

Sandra Wollman

Ms. Sandra D. Wollman CMA
Biogenidec
5525 Prescott Downs Dr
Fuquay Varina, NC 27526-7316
(919) 941-1120
fax (919) 941-1112
sandra.wollman@biogenidec.com

Huawen Xu

Ms. Huawen Xu CFM CMA
TIDLAND CORP
607 Willingham Rd
Morrisville, NC 27560
huawen_xu@yahoo.com

North Carolina Triangle Area Chapter 406
Institute of Management Accountants

Whitten Windham

Mr. Whitten P. Windham
CPA
1408 Springmoor Cir
Raleigh, NC 27615-5703

Theresa Woods

Ms. Theresa M. Woods

*MICROSPACE COMMUNICATIONS
CORP
Divisional Controller
3100 High Woods Blvd Ste 120
Raleigh, NC 27604-1033
(919) 850-4552
fax (919) 850-4518
twoods@microspace.com*

Margaret Yaeger

Mrs. Margaret S. Yaeger CMA

*PROGRESS ENERGY
Director Financial Reporting
PO Box 1551 (peb 9)
Raleigh, NC 27602-1551
(919) 546-4223
fax (919) 546-2941
todd.yaeger@pgnmail.com*

Donald Witten

Mr. Donald W. Witten Jr
DUKE UNIV
4912 Seterra Bnd
Durham, NC 27712-9744
(919) 681-1582
fax 919
donald.witten@duke.edu

William Woods

Mr. William S. Woods CMA
*FOSTER & DOOR P C
Staff Accountant
PO BOX 2100
Danville, VA 24541-0100
(434) 792-2101
fax (804) 799-1409*

Fang Yan

Ms. Fang Yan
*AXA ADVISORS
121 Button Rd
Morrisville, NC 27560
(919) 316-1300
fyan2001@hotmail.com*

Bryan Yonke

Mr. Bryan W. Yonke
*APV AMERICAS
122 S Marion Dr
Goldsboro, NC 27534-7672
(919) 731-5491
fax (919) 581-1149
bryan.yonke@invensys.com*

Donna Zimmerman

Mrs. Donna P. Zimmerman CMA CPA
*GLAXOSMITHKLINE
117 Heather Ridge Ct
Durham, NC 27712-1067
(919) 483-3505
fax (919)483-3148
dz10440@gsk.com*

MEMBERSHIP

BY

COMPANY

2005- 2006

North Carolina Triangle Area Chapter 406
Institute of Management Accountants

ABB Inc. David Kuriger	Abbott Laboratories Andrea LaBarbera	Acroprint Time Recorder Company Eugene Gardner
Acroprint Time Recorder Company Eugene Gardner	ACS INC Ellen Vola	ADVANCED MICRO DEVICES Eileen Clark
Affiliated Computer Services, In Craig Griffith	AJILON FINANCE Sue Durphy	Alfred Williams & Company Lonnie Lempert
Carl Allen Carl Allen	AM PAPPAS AND ASSOCIATES INC Russell Savre	AMERICAN FIBERS AND YARNS CO John Mays
AMERLINK LTD Lawrence Guyette	APV AMERICAS Bryan Yonke	ARMACELL LLC Donna Thedford
Armstrong World Industries Jennifer Murphy	ATI INDUSTRIAL AUTOMATION Robert Wage	AXA ADVISORS Fang Yan
Baker Furniture Upholstery Gregory Walton	BASSETT FURNITURE IND Chris Peters	Bayer Corp Neil Barratt
BB & T INSURANCE SERVICE Gary Johnson	BBNC Matthew Simmons	BD Melissa Cole
BEA SYSTEMS Gary Jordan	Beacon Digital Services LLC Carl Hicks	BILLINGS & GARRETT INC Gerald Phillips
Biogenidec Sandra Wollman	Biomerienx Inc Ronald Altman	BIOMERIEUX INC Mary Auen
BLUE CROSS BLUE SHIELD INC Mark Snedeker	BLUE CROSS BLUE SHIELD OF NC Alice Assaid Penny Kaffenberger William Palmer	BOONE CONSULTING Robert Boone
BOTTOM LINE ACCTG Nona Fisher	Bowe Bell and Howell Oscar Adkins	BRANCH BANKING & TRUST CO Stephen Kerr

North Carolina Triangle Area Chapter 406
Institute of Management Accountants

BRANSH BANKING & TRUST CO Tamer Gheit	BRIDGEPOINT Philip Keren	BUEHLER MOTOR INC Gary Cram
BUSINESS TELECOM INC Jon Wilson	CAMBIARE CONSULTING Belinda Lea Barnhart	CAMPBELL ALLIANCE GROUP INC Patrick Manhard
CAPE FEAR VALLEY HEALTH SYSTEM Sandra Godwin	CARDINAL CLINIC LLC Tina Pittman	CAROLINA POWER & LIGHT CO Masceo Deschamps Joanne Goodoff Richard Seekamp
CAROLINA QUALITY INC Bobby Jones	CASHWELL APPLIANCE PARTS INC Darrell Staton	Caterpillar Inc. Danielle Moody
CBP RESOURCES INC Wanda Hardin	CENSUS METERING SYSTEMS Paula Albertson	CERTAINTED CORP Bruce Shearin
CHILD CARE NETWORKS INC Marie Gaster	CITY OF ROCKY MOUNT Amy Staton	CLOSURE MEDICAL CORP Brent Galloway Kelly McMillen
COASTAL PHYSICIAN GROUP INC Cecilia Csapo	Commercial Casualty Ins Co -NC William Allen	ConAgra Foods Rander Harris
CONTAMINANT CONTROL INC Gerald Musselwhite	COOPER HAND TOOLS Edith Graham Michael Meade	COOPER INDUSTRIES INC Mark Evrard
COOPER TOOLS Aimee Bushiri Mary Caldwell	COTY, LLC Darl Boddorf	CP BUCKNER STEEL ERECTION INC Michael Torsiello
CP&L Lelia Mclamb Kristin Williams	CUMMINS ATLANTIC INC Curtis Horvat	D R ALLEN & SON INC Jerry King
D STEVEN CARRAWAY CPA CMA D Steven Carraway	DELOITTE & TOUCHE LLP Jack Stone	DELTA CONSOLIDATED INDUSTRIES Linda Morris

North Carolina Triangle Area Chapter 406
Institute of Management Accountants

Delta Gamma Stephanie Batchelor Anna Williams	DIOSYNTH RTP Nick Carra	D-SCAN INC Karen Walker
DUKE PRIVATE DIAGNOSTIC CLINIC Guy DeCarlucci	Duke University Paulette Germain-Bekolo Donald Witten	Duke University Health System Mark Hemric
DUKE UNIVERSITY MEDICAL CENTER Natalie Schneider	EAST CAROLINA UNIVERSITY Lizabeth Austen	East Coast Metal Distributors In Deanna Anderson John Cerqueira
EASTMAN CHEMICAL CO Jason Podvin	EBC ATOM INC Louis Leigh	e-Emphasys Technologies Anand Natarajan
ELECTRICAL EQUIPMENT CO Harry Albert	ELI LILLY AND COMPANY Erik Rodriguez	ELI Research Inc Sandra White
Elliott Consulting Services Linda Elliott	EMBEX INC Kenneth Long Ann Norstog	ENSALES INC Fred Murray
ERNST & YOUNG LLP J Betts Elizabeth Piacenza	ESB Management Services Inc Eugene Bowers	EXPLORIS Andrew Kleitsch
Exprezit Convenience Stores LLC Barbara O'Donnell	F.O.C.U.S. RESOURCES Lea Strickland	FFG COMPANIES INC Donald Hadley
FIRSTCAROLINACARE, INC. Michael George	FONVILLE MORISEY REALTY INC Steven Mull	FOOD MASTERS INC Charles Casteen William Casteen
FOSTER & DOOR P C William Woods	FRANCIS ASSOCIATES INCORPORATE Lawrence Smith	Fuqua School of Business Christopher Kitzer
General Mills Harold Alvarez	General Parts, Inc Sophie Jones	GENERAL TELEPHONE OF THE SOUTH Christine Cameron

North Carolina Triangle Area Chapter 406
Institute of Management Accountants

GlaxoSmithKline David Dietz Mary Helen Page Donna Zimmerman	GLOBAL INT'L /BRITT WORLDWIDE Lisa Madison	Global Knowledge Connie McGuinness
GOLDEN CORRAL CORP J Dale Whitworth	GOLFNET INC Patrick Maginnis	GREGORY POOLE EQUIPMENT CO Teresa Crouch Tracey Haesecker
HAND TOOLS James Spence	HARDEES FOOD SYSTEMS Kris Kaffenbarger Stuart Kaleel	HBR Ltd Barbara A Mendler
HERALD SUN Sydney Njai	HIGHWOODS PROPERTIES INC James Santaniello	HONEYWELL Thomas Gebbia
HOOVER & HOOVER CPAS Rebecca Hoover	Hudson Global Resources C Berryhill Tanya Edmonds	IBM COMMUNICATIONS Paul Sadler
IBM William Aull Shannon Cosart Tera Jackson Li Jiang Tonnette Johnson Juliana Koffa Michael Mankowski Daniel Reigada Elizabeth G Seay Andrea Tiffany Patricia Wagner	IBM CORP Steven Allman Jacinta Bazemore Mary Canady Tommy Charurat Tracie Dugdell Shannon Gamber Teresa George Nathan Gross Kathleen Hall Nancy Henry-Serra Sonia Hines Bradford Houck Stephanie Humphrey Robert Kantzes Yi-Kung Lin Mark Motamen Richard Parrish Vito Romano Cheryl Taylor Tina Vorhees Kevin Williams	IBM INTERNAL AUDIT R.Scott Levy

North Carolina Triangle Area Chapter 406
Institute of Management Accountants

INFORMATION RESOURCES GROUP R Thomas Dwyer	INTERPANE GLASS CO Thomas Koehler	INTERPATH COMMUNICATIONS INC Floyd Twyman
JAMES SPRUNT COMMUNITY COLL John Hardison	JOHN DEERE CO Thomas Crotty	JOYNER'S FUNERAL HOME Mary Quinn
KDL, INC. Karen Lightfoot	KENNAMETAL INC Rodney Lubke	KERR DRUG INC Kenneth Jones David McAnally
KIDDE FIRE FIGHTING Lenora Osborne	KIMLEY HORN & ASSOCIATES Nicholas Ellis Mark Wilson	KOONCE WOOTEN & HAYWOOD LLP J Clements
KOSA Beth Sarko	LEWIS DANZIG & COMPANY Hood Johnston,	LIBERTY FABRICS INC Jonathan Aves
LIGGETT GROUP INC Lisa Wesley	LL BUILDING PRODUCTS, INC. Glenn Fox	LOGISTICS CO David Creedon
LoneSource, Inc. Chris Murphy	LOWELL MILLER ACCOUNTANT INC Lowell Miller	LUCOR INC Kendall Carr
LUNSFORD & STRICKLAND PA James Hayne	LV BRANDS Matthew Wilford	MACKAY COMMUNICATIONS INC David Eckstine
Magneti Marelli Powertrain USA I Roger Moore	MAGNETI MARELLI USA Venia Braswell	Mallinckrodt Inc Mark Jaeger
MANAGEMENT APPLICATIONS INC Stuart Nottingham	MANAGEMENT INSIGHTS INC Rex Draughn	MANAGEMENT SOLUTIONS Robert Sefton
MARKHAM & CO LLC Robert Markham	MARTIN MARIETTA MATERIALS INC David Ellis	MCGLADREY & PULLEN LLP Colby Daughtry Keith Wallace
MCI Nancy Smith	MEREDITH COLL Bern Shuey	MICROSPACE COMMUNICATIONS CORP Theresa Woods
MIDWEST FACTORY WAREHOUSE INC D Scott Umina	MILES INC Frank Delucia	MITRETEK SYSTEMS John Stevenson

North Carolina Triangle Area Chapter 406
Institute of Management Accountants

MJ SOFFE CO. Rudolph King	MJM Investigations, Inc Jeffrey Puncher	MTS SENSORS DIVISION Andrew Doll Stephen Westerfield
N C BIOTECHNOLOGY CENTER Arthur Cielo Vicky Gipson Lori Greenstein	N CAROLINA STATE UNIV William Bevan James Sweet	NACCO Jimmie King
Nacco Materials John McClenney	NACCO Materials Handling Group I Michael Billings	NATIONAL SPINNING Kirk Robertson
NC Dept of Health & Human Svcs Xiang Gao	NC DEPT OF STATE TREASURER James Burke	NC DEPT -PUBLIC EDUCATION Joseph Belnak
NC DOC INTERNAL AUDIT R Wayne Holliday	NC REINSURANCE FACILITY David Sink	N C STATE UNIVERSITY Stephanie Berger Jenny Berryhill Yuang-Sung Chen Jennifer Harris Coltrane Bradford Eggleston Lauren Greer Laura Hagel Amy Hendricks James Langfahl Karen Nunez Katie Pearce Roby Sawyers Garrett Smith Cooper Swanson Martha Wheeler Paul Williams Samay Vitlani
NCSU BUDGET OFFICE Tracy Patty	NEAL BRADSHER & TAYLOR PA James Neal	New South Lumber Co Denise Wilson
NORTEL NETWORKS Donald Clough W David Cozart Lisa Hodge Edna Garrett Parker Jennette King John Litsas Kevin Lyon Susan MacPhail	North Carolina Dept of Commerce Robin Pasquarello	NORTHERN TELECOM INC Ronald Frydach

North Carolina Triangle Area Chapter 406
Institute of Management Accountants

<p>NOVO NORDISK Cindy Cole</p>	<p>NOVOZYMES NORTH AMERICA INC Dirk Phillips Jeffrey Warner</p>	<p>OPTICARE HEALTH SYS INC Shawn McGinty</p>
<p>Organization for Tropical Studie Roger Hart</p>	<p>Padia Consulting Inc Maureen Strahl</p>	<p>PARKER HANNIFIN CORP Frederick Ange</p>
<p>PEACE COLLEGE Linda Ferreri</p>	<p>PERFORMANCE TECHNOLOGIES INC Gary Wolfe</p>	<p>PERGO INC Finbar Daly George Hermane Christopher Johnson Synethia Layne Maksym Shyshnyak</p>
<p>PhyAmerica Government Svcs Inc Terri Anthony</p>	<p>PLAZA ASSOCIATES INC Judith McClaskey</p>	<p>PLIANT SYSTEMS INC Kathryn Morris</p>
<p>POTASHCORP Joseph Safrit</p>	<p>PPD MEDICAL COMMUNICATIONS Marcia Grosse</p>	<p>Practical Business Solutions LLC David Kraus</p>
<p>PRACTICE MANAGEMENT SERVICES Joseph Jordan</p>	<p>Precision Fabrics Group Kathleen Sprouse</p>	<p>PRICEWATERHOUSECOOPERS Erica Pollock</p>
<p>Progress Energy Kenneth Acres Susan Bennett Laura Blohm Kimberly Byrd Michael Calvello Karon Fowler Jaime Garcia Shelly Norris Daryl O'Cain Christine Perciaccante Maryam Shabon John Thomas William Traywick Frank Walker Margaret Yaeger Fred West</p>	<p>Progress Energy Services Co LLC Becky Hirte</p>	<p>PROGRESS FUELS CORP Edith Ennis</p>

North Carolina Triangle Area Chapter 406
Institute of Management Accountants

PUBLIC WORKS COMMISSION J Dwight Miller	QUALEX INC Carl Harris Cathy Montgomery	QUINTILES INC Richard Cesarski
QUINTILES TRANSNATIONAL Ian Hayden	RAYCHEM Lori McClain	REICHHOLD CHEMICALS INC Nicholas Williams
REICHHOLD INC Jimmy Crump Kimberly Ragan	RENNHACK CONSULTING INC Mark Rennhack	RESEARCH & EVALUATION ASSOC Trudy Holder
RESEARCH TRIANGLE INSTITUTE Katherine Santos-Rezendes Tammie Sawaya Rick Sisson	REVLON CONS PROD CORP Byron Leu	REVLON INC Gretchen Britt
ROMEO, WIGGINS & COMPANY, LLP Alicia Stone	ROSS INDUSTRIES INC Philip Tribel	ROYAL HOME FASHIONS INC Johnnie Hales
Saffron Technology David Baldwin	Santa Fe Natural Tobacco Co Kenneth DeHaven	SAS INSTITUTE Jean Davidson Diane Holt Robert Rowan Steven Stoddard Lori Williams
SCIQUEST COM INC David Poucher	SCOTT MEDICAL GROUP Bruce Broadbelt	SEA SUPREME INC Richard Strickler
SEAGATE TECHNOLOGY Adele McLean	SEGRO COLONIAL ABRASIVES William Saelinger	Sem Products Inc Anthony Goff
SHAW UNIVERSITY Levi Beckwith	Siemens Marsha Vosler	SIEMENS MEDICAL SYSTEMS INC Steven Weitzman
Siemens Power Transmission & Dis Carol Daugherty	SIEMENS PTD INC Martha Burris	SIGLER & ASSOCIATES Ralph Sigler
SMITH ANDERSON LAW FIRM R Donavon Munford	SMT Resource Group LLC David Roth	SOLETRON GLOBAL SERVICES Ronald Lowell
Solectron USA Inc Scott Stafford	Sony Ericsson Todd Weldy	Sony Ericsson Mobile Comm Inc Paul Markson

North Carolina Triangle Area Chapter 406
Institute of Management Accountants

Sony Ericsson Mobile Communicari Robert Lockhart	SOUTHEAST VENTURE PARTNERS Steve Rakes	SOUTHERN LITHOPLATE INC Sergio Barona
Spherion Joseph Fields	SPRINT MID-ATLANTIC TELECOM Powell Moore Wanda Smith	Standard Commercial Tobacco Co I Ricky Hardy
Starpoint Global Services Olga Tiselsky	STATE EMPLOYEES CREDIT UNION Jeffrey Boyd	STATE OF NORTH CAROLINA Robert Buckenham
STEPHENSON MILLWORK CO., INC. Leo Turner	STIMSON LANE Corey Weisner	STRATEGIC TECHNOLOGIES INC Eric Moinet
STREET CONSTRUCTION CO Paul DiPirro	SUN MICROSYSTEMS INC Joe Styres	TARGACEPT INC Alan Musso
TED BACHMAN CONSULTING Ted Bachman	TELAMON CORP Robert Ullman	TERECK OFFICE SOLUTIONS INC Raymond Szafranski
THERAPYEDGE INC Jennifer Moulton	THOMAS KNIGHT TRENT KING & CO Lucy Gallo	TIDLAND CORP Huawen Xu
TIPPER TIE Charles Marshall	TOTAL BILLINGS INC Charles Siska	Training Network Richard Arnold
TRIANGLE COMMUNITY FOUNDATION Steven Michalak	TROXLER ELECTRONIC LABS James Boylan	TYCO HEALTHCARE MALLINCKRODT Bonnie Walston
ULTIMUS INC Stephen Drago	UNC GREENSBORO Mary Lenard	UNC HEALTHCARE Mark Hoffman
UNC-CHAPEL HILL Charles Skender	UNICON CONCRETE LLC Lisa Lazar	UNITED STATES POSTAL SERVICE John Locicero
UNITIVE INC Karen Johnson	Univ of North Carolina Edward Blocher R Lee Brummet John Sullivan	UNIV OF PHOENIX ONLINE Scott Gray
UPS Michael Stenbeck	VECTOR TOBACCO INC Timothy Jackson Julie Meister	VECTOR TOBACCO USA LTD

North Carolina Triangle Area Chapter 406
Institute of Management Accountants

VISTA IT Stephen Wallace	VR BUSINESS BROKERS Richard Daigle	W Kenneth Wease CPA W Kenneth Wease
WATTS & SCOBIE CPAS David Scobie	WELLS FARGO HOME MORTGAGE Phillip Horton	WEST POINT STEVENS David Gay
Western Carolina Univ Nikhil Khandelwal	WILSONMEDICAL CENTER Jerry Godwin	WYETH-LEDERLE VACCINES & PED Joseph Clancy

STUDENTS

2005- 2006

Scott Truax – NC State Chapter President

Julie Barefoot
Stephanie Batchelor
Stephanie Berger
Jenny Berryhill
Jeffrey Briggs
Cynthia Cassel
Ann Castelloe
Christopher Cline
John Coker
Lindsay Cordova
April Creech
Brice Debnam
Angela DePay
Madalina Dobra
Bradford Eggleston
Rhonda Flowers
Lauren Greer
Laura Hagel
Christine Harbinson
Melissa Harris
Telecia Hartsfield
Amy Hendricks
Jennifer Hicks
Elizabeth Hudgins
Beverly Hudler
Arthur Jaeger
Deborah Ann Kassirer

Nikhil Khandelwal
Lena Lee
John Leskovec
Julie Jeister
David Moses
Fred Murray
Amanda Musgrove
Sharla Payton
Kathie Pearce
Elizabeth Peterson
Jennifer Pittman
Jamie Pope
Angela Rackley
Beth Sarko
Garrett Smith
Clinton Stanley
John Sullivan
Cooper Swanson
Jeffrey Taylor
Kevin Thomas
Lauren Toler
James Truax
Samay Vithlani
Joseph White
Anna Williams
Elizabeth Williams
Yen-Chen Wu

MEMBERSHIP
BY
CERTIFICATON
2005 – 2006

North Carolina Triangle Area Chapter 406
Institute of Management Accountants

<p>Mary Auen CFM CMA BIOMERIEUX INC 1301 Shady Lane Durham, NC 27712 (919) 620-2960 fax (919) 620-2788 maryauen@juno.com</p>	<p>Lizbeth Austen CMA CPA EAST CAROLINA UNIVERSITY 1744 Beaumont Dr. Greenville, NC 27858-4616 (252) 328-6102 austenlisa@msn.com</p>	<p>Joseph Belnak CMA NC DEPT -PUBLIC EDUCATION 4225H Brockton Dr Raleigh, NC 27604-2686 (919) 715-1452</p>
<p>Susan Bennett CMA CPA PROGRESS ENERGY, INC. PO Box 478 120 Harris St Wendell, NC 27591-8023 (919) 546-5995 susan.bennett@pgnmail.com</p>	<p>Lawrence Blake CMA CPA PO Box 58081 Fayetteville, NC 28305-8081 (919) 486-5772 fax (910) 485-6177</p>	<p>Edward Blocker CMA CPA UNIV OF NORTH CAROLINA Kenan-Flagler School of Bus McColl Bldg CB3490 Chapel Hill, NC 27599-0001 (919) 962-3200 fax (919) 962-4727 blochere@unc.edu</p>
<p>Darl Boddorf CMA COTY, LLC 100 Poppleford Place Cary, NC 27511-3008 (919) 895-5483 dsevert@nc.rr.com</p>	<p>Eugene Bowers CMA ESB Management Services Inc 1407 Granada Dr Raleigh, NC 27612-5109 (919) 274-6209 esbiii@bellsouth.net</p>	<p>Jeffrey Boyd CMA CPA STATE EMPLOYEES CREDIT UNION 134 Shady Meadow Circle Cary, NC 27513-9103</p>
<p>Gretchen Britt CMA CPA REVLON INC 7924 River Dare Ave Youngsville, NC 27596-9586 (919) 603-2852</p>	<p>Bruce Broadbelt CMA SCOTT MEDICAL GROUP 5416 Lake Edge Dr Holly Springs, NC 27540-9341 (919) 768-4147 fax (919) 383-0355 bbroadbelt@mindspring.com</p>	<p>Ann Bublitz CMA 1220 Tacketts Pond Dr Raleigh, NC 27614-7825 (919) 845-6847 fax 919-845-6863 annbublitz@earthlink.net</p>
<p>Robert Buckenham CMA STATE OF NORTH CAROLINA 721 Bayberry Ct Nashville, NC 27856 (252) 399-2147 buckenham@earthlink.net</p>	<p>James Burke CMA CPA NC DEPT OF STATE TREASURER 8709 Catamaran Dr Raleigh, NC 27615 (919) 807-2383 fax (919) 807-2398</p>	<p>Kimberly Byrd CMA PROGRESS ENERGY INC 6680 English Ivy Ln Raleigh, NC 27615-6303 919-546-2789</p>
<p>Michael Calvello CMA PROGRESS ENERGY 2436 Millstone Hbr Raleigh, NC 27603-3966 (919) 546-2248 mike.calvello@cplc.com</p>	<p>Mary Canady CFM CMA IBM CORP 2616 Meadow Star Ct Raleigh, NC 27615-8029 (919) 486-8893 marycan@us.ibm.com</p>	<p>D. Steven Carraway CMA CPA D STEVEN CARRAWAY CPA CMA 315 Arrundale Drive Cary, NC 27511-4409 fax (919) 467-8026 dscarraway@ipass.net</p>

North Carolina Triangle Area Chapter 406
Institute of Management Accountants

<p>John Cerqueira CMA <i>East Coast Metal Distributors In</i> 1313 S Briggs Ave Durham, NC 27703-5049 (919) 598-5030 jcerqueira@ecmdi.com</p>	<p>Richard Cesarski CMA <i>QUINTILES INC</i> 306 Tattenhall Dr Apex, NC 27502-4419 (919) 998-7407</p>	<p>Tommy Charurat CFM CMA CPA <i>IBM CORPORATION</i> 100 Dumont Court Apex, NC 27502-3858 (919) 254-7273 fax (919) 543-9196 master.strategist@hotmail.com</p>
<p>Eileen Clark CFM CMA <i>ADVANCED MICRO DEVICES</i> 3101 Sweet Autumn Cove Austin, TX 78735-1525 (512) 602-7529 eileen.lockerd@cirrus.com</p>	<p>Donald Clough CMA <i>NORTEL NETWORKS</i> 7 Mill Haven Ct Durham, NC 27713-6038 (919) 992-4551 dhclough53@yahoo.com</p>	<p>Shannon Cosart CFM <i>IBM</i> 22 Dardanelle Ln Durham, NC 27713 (919) 543-7599 scosart@us.ibm.com</p>
<p>David Creedon CMA <i>LOGISTICS CO</i> 3312 Mandalay St Fayetteville, NC 28303-4619 (910) 323-9500 fax (910) 323-9500 DaveCreedon@msn.com</p>	<p>Finbar Daly ACA CMA <i>PERGO INC</i> 905 Norwood Ln Apex, NC 27502-1656 (919) 773-5062 fax (919) 773-6003 BARRY.DALY@PERGO.COM</p>	<p>Jean Davidson CMA CPA <i>SAS INST</i> 10701 Old Brook Ct Raleigh, NC 27614 (919) 531-8203 fax (919) 677-4444 jean.davidson@sas.com</p>
<p>Ginny Davis CMA CPA 105 Culcross Ct Cary, NC 27513-4939 gindavis@bellsouth.net</p>	<p>Paula Davis CMA 4720 Hilltop Needmore Rd Fuquay Varina, NC 27526-9262 paulabdavis@earthlink.net</p>	<p>R. Scott Day CMA 1829 Tarbert Drive Cary, NC 27511 (919) 486-8129 fax (919) 486-8944 rsd@us.ibm.com</p>
<p>Guy DeCarlucci CMA <i>DUKE PRIVATE DIAGNOSTIC CLINIC</i> 5505 Orchid Hill Dr Raleigh, NC 27613-1420 (919) 668-5121</p>	<p>John Dennis CFM CMA 6433 Lakeland Dr Raleigh, NC 27612-6524 fax (919) 841-6709 jcdennis@worldnet.att.net</p>	<p>Thomas Dow CMA CPA 518 Loblolly Dr Durham, NC 27712 kis@nc.rr.com</p>
<p>Stephen Drago CMA CPA <i>ULTIMUS INC</i> 5205 Longwood Dr Durham, NC 27713-8013 (919) 678-0900 fax (919) 490-6497 dragosss@aol.com</p>	<p>Rex Draughn CFM CIA CMA <i>MANAGEMENT INSIGHTS INC</i> 4223 High Star Lane Dallas, TX 75287 (972) 755-2016 fax (972) 755-2080 rdraughn@sbcglobal.net</p>	<p>Tracie Dugdell CMA <i>IBM CORP</i> 7125 Breckenridge Ave Raleigh, NC 27615-6606 (919) 486-8993 love2quilt@att.net</p>

North Carolina Triangle Area Chapter 406
Institute of Management Accountants

<p>Nicholas Ellis CMA <i>KIMLEY-HORN AND ASSOCIATES INC</i> 3328 Alleghany Dr Raleigh, NC 27609</p>	<p>Edith Ennis CMA <i>PROGRESS FUELS CORP</i> 3409 Edwards Drive Plano, TX 75025 edithennis@mindspring.com</p>	<p>Linda Ferreri CMA <i>PEACE COLLEGE</i> 15 E Peace St Raleigh, NC 27604-1176</p>
<p>Ronald Fleming CIA CMA CPA 9 Tipperary Terr Ringoos, NJ 08551 (240) 601-1414 fax (775) 201-7638 RAFleming@aol.com</p>	<p>Maggie Lisa Frady-Davis CBA CMA 6205 Sweden Dr Raleigh, NC 27612-1907 lfrady@nortelnetworks.com</p>	<p>Shannon Gamber CFM CMA CPA <i>IBM INC</i> 8828 Kaplan Woods Way Wake Forest, NC 27587 hivre@excite.com</p>
<p>Xiang Gao CFM CMA <i>NC Dept of Health & Human Svcs</i> 3301 Drexel Hill Ct Apex, NC 27539 (919) 857-4270 shanna.gao@ncmail.net</p>	<p>Marie Gaster CMA CPA <i>CHILD CARE NETWORKS INC</i> 21 Crosswinds Estates Pittsboro, NC 27312-9731 (919) 542-6644 fax (919) 542-0902 marie@childcarenetworks.org</p>	<p>Thomas Gebbia CMA CPA <i>HONEYWELL</i> 338 Pea Ridge Rd PO Box 166 Moncure, NC 27559-0166 (919) 545-3728 fax (919) 542-1258 tom.gebbia@honeywell.com</p>
<p>Teresa George CMA <i>IBM CORP</i> 345 Bandoock Dr Durham, NC 27703-9221 fax (919) 543-3255</p>	<p>Anthony Goff CMA CPA <i>Sem Products Inc</i> 651 Michael Wylie Dr Charlotte, NC 28127 (704) 716-8523 fax (704) 522-7008 brian.goff@invensys.com</p>	<p>Robert Goldman CFM CMA CPA 203 Stoneleigh Dr Cary, NC 27511-6370</p>
<p>George Golenbiewski CIA CMA CPA 118 Felspar Way Cary, NC 27511 ggolenbiewski@aol.com</p>	<p>Joanne Goodoff CIA CMA <i>CAROLINA POWER & LIGHT CO</i> 1604 Bellechasse Dr Raleigh, NC 27615-7401 (919) 546-4169 fax (919) 546-2063</p>	<p>Wm Michael Gorman CMA CPA 1000 Buckingham Way Apex, NC 27502-9339 fax (919) 782-9113</p>
<p>Robert Green CMA 1765 Dickens Cv Germantown, TN 38139-3600 (901) 434-8047 fax (901) 434-8225 ragreen2@fedex.com</p>	<p>Jim Griffin CFM CMA 401 Trappers Run Dr Cary, NC 27513-4834</p>	<p>Joanne Grussemeyer CMA CPA 101 Cassidy Ct Cary, NC 27511-5593 (919) 461-9883 fax (919) 993-4421 igrusse@us.ibm.com</p>
<p>Lawrence Guyette CMA <i>AMERLINK LTD</i> 4248 Olde Rass farm Rd Rocky Mount, NC 27804 (252) 977-2545 fax (252) 977-6031 ltguyette@aol.com</p>	<p>Kathleen Hall CFM CMA <i>IBM CORP</i> 4 Wakeman Hill Road Sherman, CT 06784 (914) 766-4623 fax (914) 766-9474 kyhall@us.ibm.com</p>	<p>John Hardison CMA <i>JAMES SPRUNT COMMUNITY COLL</i> 221 Washington Cir Wallace, NC 28466-1557 (910) 296-2432</p>

North Carolina Triangle Area Chapter 406
Institute of Management Accountants

<p>Carl Harris CMA CPA <i>QUALEX INC</i> 4430 Sun Valley Dr Durham, NC 27707-5689 (919) 484-3666 CarlHarris@nc.rr.com</p>	<p>Jennifer Harris Coltrane CMA CPA <i>NORTH CAROLINA ST UNIV</i> 6221 Woodwork Trail Raleigh, NC 27606 (919) 5159230 fax (919) 254-3165 jennsh@prodigy.net</p>	<p>Rander Harris CFM CMA CPA <i>ConAgra Foods</i> 8501 ONeal Rd Raleigh, NC 27613-4210 randerhsr@yahoo.com</p>
<p>Roger Hart CMA <i>Organization for Tropical Studie</i> 128 Gristmill Ln Chapel Hill, NC 27514 (919) 684-8087 fax (919) 684-5661 RogerIhart@aol.com</p>	<p>James Hayne CMA CPA <i>LUNSFORD & STRICKLAND PA</i> 1038 Kingsway Dr Apex, NC 27502-8945 (919) 783-7073 fax (919) 467-7929 jimh@lscpas.com</p>	<p>Mark Hemric CMA <i>Duke University Health System</i> 113 Castlefern Dr Cary, NC 27513-5157 (919) 416-5356 fax (919) 416-4748 mark.hemric@duke.edu</p>
<p>D Henry CMA 121 Meadows Cir Knightdale, NC 27545-9301 919-217-9308 darbonnebayou@nc.rr.com</p>	<p>Nancy Henry-Serra CMA <i>IBM CORP</i> 12333 Wharton's Way Raleigh, NC 27613 (919) 543-8158 nlserra@aol.com</p>	<p>Lisa Hodge CMA CPA <i>NORTEL NETWORKS INC</i> 8605 Zinfandel Place Raleigh, NC 27615-2744 (919) 992-7442 fax (919) 997-0003 lisahodg@nortelnetworks.com</p>
<p>Mark Hoffman CMA CPA <i>UNC HEALTHCARE</i> 105 Flora Springs Dr Cary, NC 27519 (919) 966-5153 mhoffman@unch.unc.edu</p>	<p>Bradford Houck CFM CMA CPA <i>IBM CORP</i> 5500 Pine Leaf Ct Raleigh, NC 27606-9598 (919) 486-8646 bhouck@us.ibm.com</p>	<p>Grace Hoyt CMA 1365 Valley Green Road Etters, PA 17319 gracehoyt@hotmail.com</p>
<p>Timothy Jackson CMA CPA <i>VECTOR TOBACCO USA LTD</i> 250 Crown Blvd Timberlake, NC 27583 (336) 598-7301 fax (336) 598-7402 tjackson@vectob.com</p>	<p>Li Jiang CFM CMA <i>IBM</i> 108 Beaver Glen Court Morrisville, NC 27560-7564 (919) 517-0716 lijiang@us.ibm.com</p>	<p>Elizabeth John CFM CMA 311 Goose Creek Road New Bern, NC 28562 shebaelizabeth@iwon.com</p>
<p>Christopher Johnson CMA <i>PERGO INC</i> 7812 Tylerton Dr Raleigh, NC 27613-1553 (919) 773-5189 chris.johnson@pergo.com</p>	<p>Hood Johnston CMA CPA <i>LEWIS DANZIG & COMPANY</i> 58 James Road Lewisburg, PA 17837-8848 (570) 742-2613 fax (570) 742-3956 hoodj@sunlink.net</p>	<p>Bobby Jones CMA CPA <i>CAROLINA QUALITY INC</i> PO Box 2330 Henderson, NC 27536-2330 (252) 492-2763 fax (252) 492-9586 jjones@carolinaqualityinc.com</p>

North Carolina Triangle Area Chapter 406
Institute of Management Accountants

<p>Kenneth Jones CMA KERR DRUG INC 3128 Gross Ave Wake Forest, NC 27587-6488 (919) 544-3896 fax (919) 544-3796 ken@deltacomm.com</p>	<p>Gary Jordan CMA CPA BEA SYSTEMS 6708 Bentwinds Ln Fuquay Varina, NC 27526-7572 (919) 349-6295 fax (908) 580-3080 garyjordan-cpa@nc.rr.com</p>	<p>Kris Kaffenbarger CMA CPA HARDEES FOOD SYSTEMS 505 N 7th St 2000 Saint Louis, MO 63101 (614) 764-8443 fax (614) 764-6894 Kris_Kaffenbarger@wendys.com</p>
<p>Stuart Kaleel CMA HARDEE'S FOOD SYSTEMS INC 1117 Westrun Dr Ballwin, MO 63021-6145 (252) 450-8839 skaleel@ckr.com</p>	<p>Robert Kantzes CMA IBM CORP 4421 Bracada Dr Durham, NC 27705-1607 (919) 486-2957</p>	<p>Matthew Karash CMA 204 Martins Point Pl Apex, NC 27502-5858</p>
<p>Joan Kelly CMA 1133 Redford Drive Raleigh, NC 27603-4755</p>	<p>Philip Keren CMA BRIDGEPOINT 102 Hardaway Ct Cary, NC 27513-5623 (919) 468-3436 fax (919) 468-3522 pkeren@nc.rr.com</p>	<p>Rudolph King CMA MJ SOFFE CO. One Soffe Drive Fayetteville, NC 28312-5262 (910) 483-2500 rking@mjsoffe.com</p>
<p>Christopher Kitzer CFM CMA CPA Fuqua School of Business 2417 Northplace Way Smyrna, GA 30080 ckitzer@hotmail.com</p>	<p>Andrew Kleitsch CMA CPA EXPLORIS 2608 Hiking Trail Raleigh, NC 27615-3913 (919) 857-1013 fax (919) 597-3817</p>	<p>Juliana Koffa CFM CMA IBM 1221 Fairview Club Dr Wake Forest, NC 27587 (919) 254-7341 fax (919) 562-1689 Koffa@us.ibm.com</p>
<p>Mary Lenard CMA UNC GREENSBORO 3049 Imperial Oaks Dr Raleigh, NC 27614 (336) 256-0122 mjlenard@uncg.edu</p>	<p>Yi-Kung Lin CMA CPA IBM CORP 1120 Four Wheel Dr Wake Forest, NC 27587-8689 (919) 301-5475 fax (919) 301-5636 changlin@mindspring.com</p>	<p>John Litsas CMA CPA NORTEL NETWORKS 1000 Ravenscar Dr Raleigh, NC 27615-4733</p>
<p>Kenneth Long CFM CMA EMBEX INC 307 Mill Creek Dr Fuquay-Varina, NC 27526 (919) 314-2523 klong@embrex.com</p>	<p>Rodney Lubke CMA KENNAMEDAL INC 11233 N Radner Way Raleigh, NC 27613-5531</p>	<p>Rodney Lundgren CMA CPA 709 Knightsborough Way Apex, NC 27502-4553 lundconsul@aol.com</p>
<p>Susan MacPhail CMA NORTEL NETWORKS 4812 Montvale Dr Durham, NC 27705-4929 (919) 997-4002 macphail@nortelnetworks.com</p>	<p>Lisa Madison CFM CMA CPA GLOBAL INT'L /BRITT WORLDWIDE 3167 Tucker St Ext Burlington, NC 27215-8906 fax (242) 363-5302</p>	<p>David Maness CMA CPA 5408 Leopards Bane Ct Holly Springs, NC 27540-9378 david.maness@manesspllc.com</p>

North Carolina Triangle Area Chapter 406
Institute of Management Accountants

<p>Patrick Manhard CFM CMA CPA <i>CAMPBELL ALLIANCE GROUP INC</i> 8540 Colonnade Center Dr Ste 401 Raleigh, NC 27615 919-844-7100 fax 919-844-7560 pmanhard@campbellalliance.com</p>	<p>Michael Mankowski CFM CMA CPA <i>IBM</i> 100 E Hartsdale Ave Apt 5DE Hartsdale, NY 10530 (919) 766-1423 mikemank@hotmail.com</p>	<p>Martin Marks CMA 306 Berryhill Dr Carrboro, NC 27510 mart428@bellsouth.net</p>
<p>John Mays CMA CPA <i>AMERICAN FIBERS AND YARNS CO</i> PO Box 16309 Chapel Hill, NC 27514 919-969-4232 jmays@afyarns.com</p>	<p>Lori McClain CMA <i>RAYCHEM</i> 404 Brook Creek Dr Apex, NC 27502-6124 (919) 557-8439</p>	<p>Thomas McEvoy CMA 44 Mukurta St Chapel Hill Queensland 4069, Australia</p>
<p>Charles McKee CFM CMA PO Box 195697 Winter Springs, FL 32719-5697 (407) 448-5107 chuck_mckee_3@yahoo.com</p>	<p>Adele McLean CMA CPA <i>SEAGATE TECHNOLOGY</i> 1872 Huxley Ct San Jose, CA 95125 (831) 439-5708 tarheeladele@yahoo.com</p>	<p>Michael Meade CMA <i>COOPER HAND TOOLS DIVISION</i> 104 Walcott Way Morrisville, NC 27560-8335 919-783-2032 fax 919-783-2007 michael.meade@coopertools.com</p>
<p>Barbara A Mandler CFM CMA <i>HBR Ltd</i> 103 Tolliver Ct Cary, NC 27511 (361) 332-9980 fax (361) 332-9981 bmandler@hbrlaw.net</p>	<p>Mirit Michaels CFM CMA CPA 4724 Delta Vision Ct Raleigh, NC 27612-7088 MMichaels2.MBA99@alumni.stern.nyu.edu</p>	<p>Steven Michalak CMA <i>TRIANGLE COMMUNITY FOUNDATION</i> PO Box 12834 RTP, NC 27709-2834 (919) 474-8370 fax (919) 941-9208 steve@trianglecf.org</p>
<p>Powell Moore CMA <i>SPRINT MID-ATLANTIC TELECOM</i> 14111 Capital Blvd Wake Forest, NC 27587-7055 (919) 554-7726</p>	<p>Kathryn Morris CMA CPA <i>PLIANT SYSTEMS INC</i> 304 Carol St Carrboro, NC 27510-1106</p>	<p>Linda Morris CMA <i>DELTA CONSOLIDATED INDUSTRIES</i> 118 Trimble Ave Cary, NC 27511-6208 (919) 838-2719 linda.morris@dcinds.com</p>
<p>Mark Motamen CFM CMA <i>IBM CORP</i> 5201 Cedarwood Drive Raleigh, NC 27609-4616 (919) 486-8865 fax (919) 486-8940 mmotamen@mindspring.com</p>	<p>Chris Murphy CIA CMA <i>LoneSource, Inc.</i> 12113-106 Oakbrook View Dr Raleigh, NC 27614 tmurphy3919@yahoo.com</p>	<p>Jennifer Murphy CMA <i>Armstrong World Industries</i> 424 Wetherburn Dr Lancaster, PA 17601 (717) 396-4129 jennifermurphy816@hotmail.com</p>

North Carolina Triangle Area Chapter 406
Institute of Management Accountants

<p>Gerald Musselwhite CMA CPA <i>CONTAMINANT CONTROL INC</i> 3404 Arboretum Pl Fayetteville, NC 28303-4992 (910) 484-7000 fax (910) 484-4978 jmusselwhite@contaminantcontrol.com</p>	<p>Alan Musso CMA CPA <i>TARGACEPT INC</i> 200 E First St Ste 300 Winston Salem, NC 27101-4165 (336) 480-2186 fax (336) 480-2107 alan.musso@targacept.com</p>	<p>Shelly Norris CMA CPA <i>PROGRESS ENERGY</i> 4870 NC Hwy 50 S Benson, NC 27504-8637 (919) 546-3496 fax (919) 546-2941 shelly.norris@pgnmail.com</p>
<p>Thomas O'Larnic CFM CMA CPA 7504 Topsy Sq Wake Forest, NC 27587-5422 tolarnic@earthlink.net</p>	<p>Mary Helen Page CMA CPA <i>GlaxoSmithKline</i> 6749 Walnut Cove Dr Raleigh, NC 27603-9112 (919) 483-2741 TwinMomofTwo@aol.com</p>	<p>William Palmer CMA <i>BLUE CROSS BLUE SHIELD OF NC</i> 916 Macon Pl Raleigh, NC 27609-6327 919-765-7439 Bill.Palmer@bcbsnc.com</p>
<p>Chris Peters CMA <i>BASSETT FURNITURE IND</i> 4782 Chippenham Dr Roanoke, VA 24018-3446 Chrisrp2@cs.com</p>	<p>Jason Podvin CMA CPA <i>EASTMAN CHEMICAL CO</i> 427 Fishery Loop Rd Erwin, TN 37650-8922 (423) 229-2647 fax (423) 224-7240 jjpodvin@eastman.com</p>	<p>Erica Pollock CMA <i>PRICEWATERHOUSECOOPERS</i> 2225 Thornblade Dr Raleigh, NC 27604 (919) 755-3000</p>
<p>David Poucher CIA CMA CPA <i>SCIQUEST COM INC</i> 11108 Woodmont Dr Raleigh, NC 27613-6809 (919) 659-2100 fax (919) 659-2199 dpoucher@sciquest.com</p>	<p>Mary Quinn CMA CPA <i>JOYNER'S FUNERAL HOME</i> 1704 Chamberlain Dr Wilson, NC 27896-1560 (919) 823-4111 fax (919) 823-8723 quinnmk@aol.com</p>	<p>Mark Rennhack CFM CMA CPA <i>RENNHACK CONSULTING INC</i> 123 Mel Oak Drive Chapel Hill, NC 27516-9305 (919) 969-7825 fax (919) 882-9081 markr@rennhackconsulting.com</p>
<p>Kirk Robertson CMA <i>NATIONAL SPINNING</i> 1106 Worthington Rd Winterville, NC 28590-7837 (252) 975-7610 krobertson@natspin.com</p>	<p>Vito Romano CMA <i>IBM CORP</i> 205 Riverwalk Circle Cary, NC 27511-7249 vito@us.ibm.com</p>	<p>Timothy Romocki CMA PO Box 971 2625 Brassfield Rd Creedmoor, NC 27522-8704 (919) 807-2387 tim.romocki@treasurer.state.nc.us</p>
<p>William Saelinger CMA <i>SEGRO COLONIAL ABRASIVES</i> 8 Holbrook Ln Paxton, MA 01612 (508) 795-5046 lgstreet@mindspring.com</p>	<p>James Santaniello CIA CMA <i>HIGHWOODS PROPERTIES INC</i> 3100 Smoketree Ct #600 Raleigh, NC 27604-1050 (919) 875-6665 fax (919) 876-2448 jim.santaniello@highwoods.com</p>	<p>Katherine Santos-Rezendes CMA <i>RTI International</i> 214 Torrey Pines Dr Cary, NC 27513-3441 (919) 541-6162 fax 919-541-6288 rezendes@bellsouth.net</p>

North Carolina Triangle Area Chapter 406
Institute of Management Accountants

<p>Russell Savre CMA AM PAPPAS AND ASSOCIATES INC 111 Legacy Lane Durham, NC 27713-9019</p>	<p>Roby Sawyers CMA CPA NORTH CAROLINA STATE UNIV Dept of Acct Campus Box 8113 Raleigh, NC 27695-8113 (919) 515-4443 fax (919) 545-4446 ROBY_SAWYERS@NCSU.EDU</p>	<p>David Schmid CMA 130 River Landing Dr Unit 1205 Charleston, SC 29492 sdave@hotmail.com</p>
<p>Richard Seekamp CFM CMA CAROLINA POWER & LIGHT CO INC 204 Copper Hill Dr Raleigh, NC 27606-8416 (919) 546-4226 fax (919) 546-7826 skip.seekamp@cplc.com</p>	<p>Asit Sharma CMA 3001 Englefield Dr Raleigh, NC 27615 (919) 872-1260 asharma@stancilcpa.com</p>	<p>Bern Shuey CMA CPA MEREDITH COLL 4516 Laid Back Ln Zebulon, NC 27597-7549 fax (919) 570-6592 bkshuey@aol.com</p>
<p>Ralph Sigler CMA SIGLER & ASSOCIATES 1397 Capital Blvd Raleigh, NC 27603-1117 (910) 278-6472 ipolybag@ntwrks.com</p>	<p>Matthew Simmons CMA CPA BBNC 300 N Hawthorne Rd Winston Salem, NC 27104 (336) 733-3412 fax (336) 733-3123 simmons@blueridgeonline.net</p>	<p>Charles Skender CFM CMA UNC-CHAPEL HILL Kenan-Flagler Business School Box 3490 Chapel Hill, NC 27599-0001 skenderc@bschool.unc.edu</p>
<p>Michael Smith CMA 1702 Patterson Grove Rd Apex, NC 27502-9519 ncsmiths_98@yahoo.com</p>	<p>Amy Staton CMA CPA CITY OF ROCKY MOUNT 224 Emerson Drive Rocky Mount, NC 27803-2234 (252) 972-1217</p>	<p>Lea Strickland CFM CMA F.O.C.U.S. RESOURCES 104 Barcelona Ct Cary, NC 27513-4201 (919) 210-7171 lea@focusresourcesinc.com</p>
<p>Joe Styres CFM CMA SUN MICROSYSTEMS INC 102 Painted Turtle Ln Chapel Hill, NC 27516 (919) 616-2229 castyres@aol.com</p>	<p>Raymond Szafranski CMA CPA TERECK OFFICE SOLUTIONS INC 200 Homestead Dr Cary, NC 27513-2904 (919) 484-9270 ray@tereckoffice.com</p>	<p>Jolie Taylor CMA CPA 112 Fieldbrook Ct Cary, NC 27519 rjstaylor@mindspring.com</p>

North Carolina Triangle Area Chapter 406
Institute of Management Accountants

<p>William Traywick CMA PROGRESS ENERGY 137 Private Drive #10463 Proctorville, OH 45669 (704-526-0745 fax 704-526-0703 bill.traywick@progressfuels.com</p>	<p>Leo Turner CFM CMA STEPHENSON MILLWORK CO., INC. 8001 Hawkshead Road Wake Forest, NC 27587 (252)237-1141 fax (252)237-4377 lturnerjr@aol.com</p>	<p>D Scott Umina CMA MIDWEST FACTORY WAREHOUSE INC 1054 Gateway Dr Dayton, OH 45404 (937) 228-3211 fax (937) 228-0225 sumina@sugar-creek.com</p>
<p>Karl Vass CIA CMA CPA 4821 Sinclair Dr Raleigh, NC 27616-5451 (919) 834-2893</p>	<p>Charles Venable CMA 12016 Pawleys Mill Cir Raleigh, NC 27614 venable@rtpfcu.org</p>	<p>Tina Vorhees CMA IBM CORP 5200 Deergrass Ct Raleigh, NC 27613-6567 (919) 543-7389 fax (919) 848-9055</p>
<p>Stephen Wallace CFM CMA CPA VISTA IT 3220 Clandon Pk Dr Raleigh, NC 27613-8838 (703) 561-4000 fax (919) 783-4635 steve.wallace@vistait.com</p>	<p>Bonnie Walston CMA TYCO HEALTHCARE MALLINCKRODT 100 Wild Brook Court Cary, NC 27518 (919) 878-2958 bonnie.walston@tycohealthcare.com</p>	<p>W Kenneth Wease CMA CPA W Kenneth Wease CPA 205 Wood Hollow Drive Cary, NC 27513-4955 (919) 460-3333 fax (919) 469-0003 kwease@mindspring.com</p>
<p>Corey Weisner CMA STIMSON LANE 5746 28th Ave NE Seattle, WA 98105-5518 (425) 415-3256 beerman_68@hotmail.com</p>	<p>Tom Welsh CMA 1210 Kintail Dr Raleigh, NC 27613-8121 tomgwelsh@hotmail.com</p>	<p>Martha Wheeler CMA CPA FLM NC STATE UNIV 302 Glen Bonnie Ln Cary, NC 27511-5462 ann_wheeler@ncsu.edu</p>
<p>Sandra White CMA CPA ELI Research Inc 6015 Karyn's Rd Efland, NC 27243 (919) 314-2042 fax (919) 281-8983 sandiw@eliresearch.com</p>	<p>Kevin Williams CMA IBM CORP 103 Kronos Ln Cary, NC 27513-5340 (919) 543-2834</p>	<p>Kristin Williams CMA CP&L 2112 Stanton Hall CT Raleigh, NC 27614 (919) 546-6323 fax (919) 620-2556 kristin.justice@cplc.com</p>
<p>Jon Wilson CMA BUSINESS TELECOM INC 3220 Falconhurst Dr Wake Forest, NC 27587-4813 (919) 863-7166 sean.wilson@btitele.com</p>	<p>Mark Wilson CMA KIMLEY HORN & ASSOCIATES PO Box 33068 Raleigh, NC 27636-3068 (919) 677-2010</p>	<p>Gary Wolfe CMA PERFORMANCE TECHNOLOGIES INC 204 Danton Dr Cary, NC 27511-9060 (919) 743-5059 fax (919) 743-5116 gary.wolfe@centerpiece.com</p>

North Carolina Triangle Area Chapter 406
Institute of Management Accountants

<p>Sandra Wollman CMA <i>Biogenidec</i> 5525 Prescott Downs Dr Fuquay Varina, NC 27526-7316 (919) 941-1120 fax (919) 941-1112 sandra.wollman@biogenidec.com</p>	<p>William Woods CMA <i>FOSTER & DOOR P C</i> PO BOX 2100 Danville, VA 24541-0100 (434) 792-2101 fax (804) 799-1409</p>	<p>Huawen Xu CFM CMA <i>TIDLAND CORP</i> 607 Willingham Rd Morrisville, NC 27560 huawen_xu@yahoo.com</p>
<p>Margaret Yaeger CMA CPA <i>PROGRESS ENERGY</i> PO Box 1551 (peb 9) Raleigh, NC 27602-1551 (919) 546-4223 fax (919) 546-2941 todd.yaeger@pgnmail.com</p>	<p>Donna Zimmerman CMA CPA <i>GLAXOSMITHKLINE</i> 117 Heather Ridge Ct Durham, NC 27712-1067 (919) 483-3505 fax (919)483-3148 dz10440@gsk.com</p>	